

작업공정사진철

고객명: (주)
공사명: 주단가공공장 VBM(V118) TABLE MOTOR

규격: VECTOR 1PH8224 (355~450V 1000~1350RPM)

REPAIR 내역: 분해 및 불순물 CLEANSING DRYING
INSULATING VARNISH DIPPING DRYING
양측 HOUSING METALLIZING 연마
BEARING교환
입 출고검사 시운전 TEST



<http://jinyangmotor.com/>

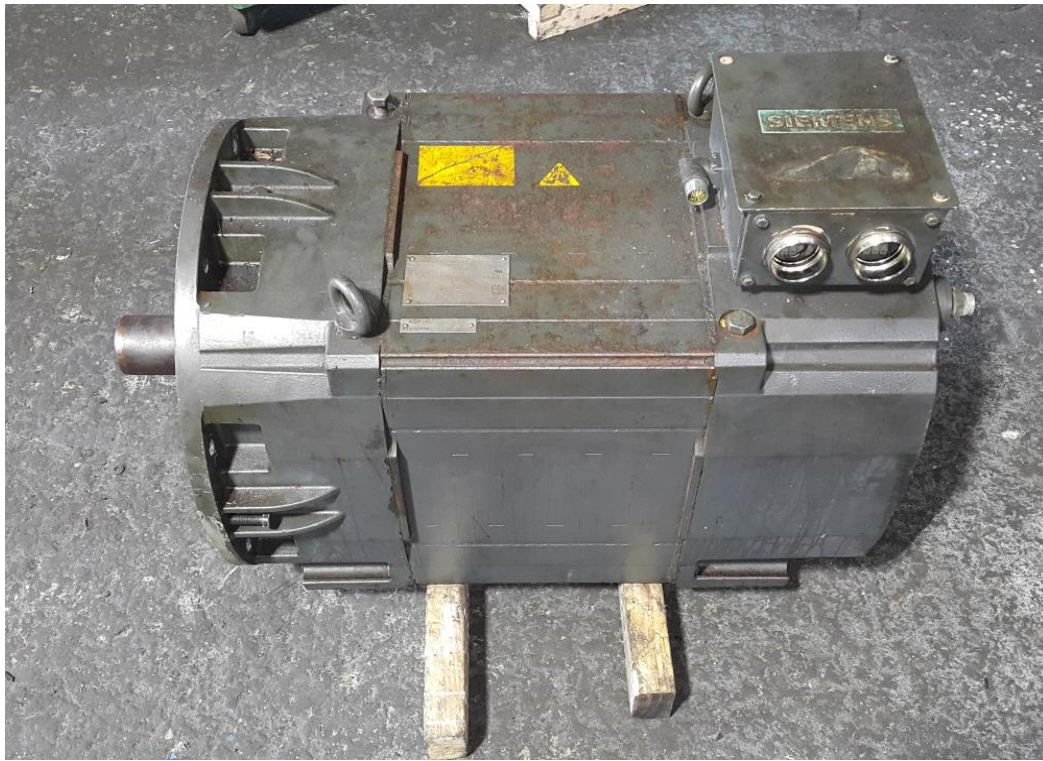


JIN YANG

작업 공정 사진

작업공정

VECTOR MOTOR 입고검사



Ass'y

분해 전

작업공정

VECTOR MOTOR 입고검사



분해 실시

BEARING 부 GREASE CHARGING주기가 너무 긴 것으로 보임

JIN YANG

작업 공정 사진

작업공정

VECTOR MOTOR 입고검사

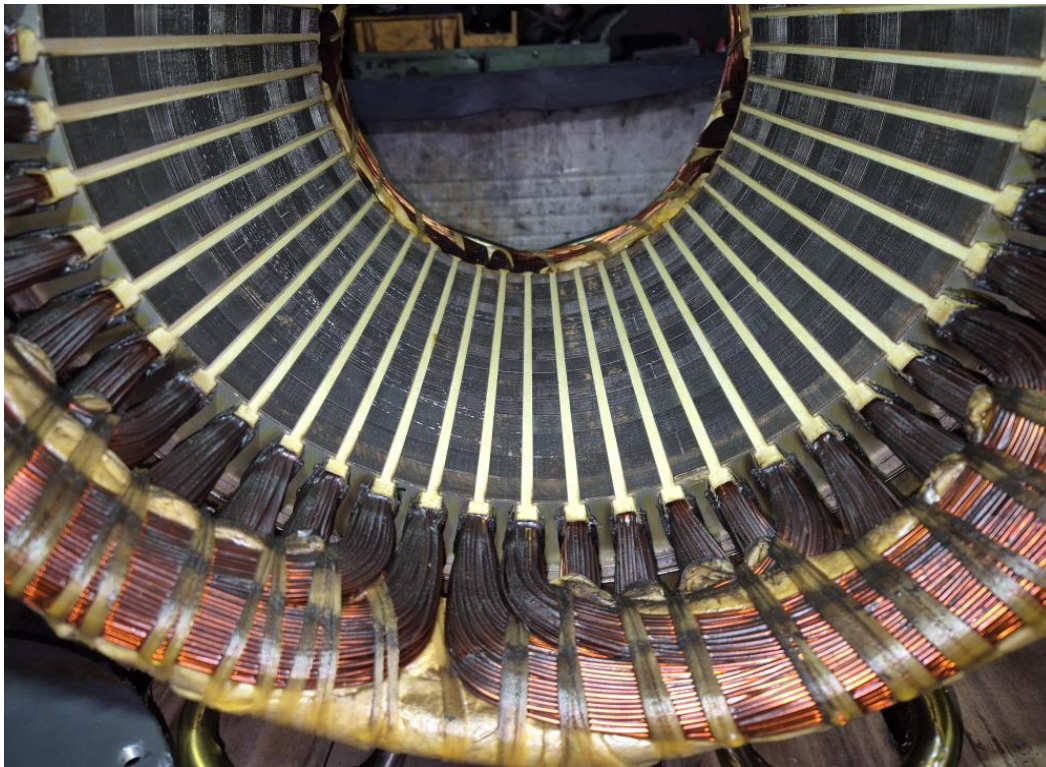


STATOR 권체

분해 후

작업공정

VECTOR MOTOR 입고검사



STATOR 권체

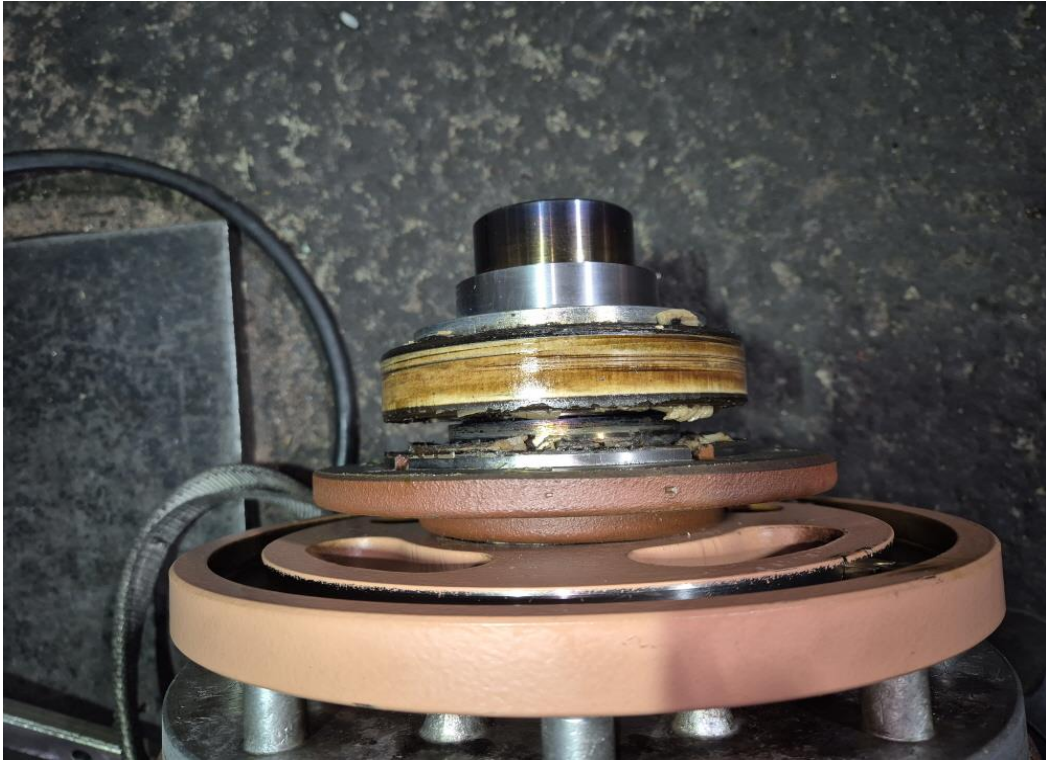
유분 및 불순물 권선에 고작

JIN YANG

작업 공정 사진

작업공정

VECTOR MOTOR 입고검사



반 부하측

절연 BEARING

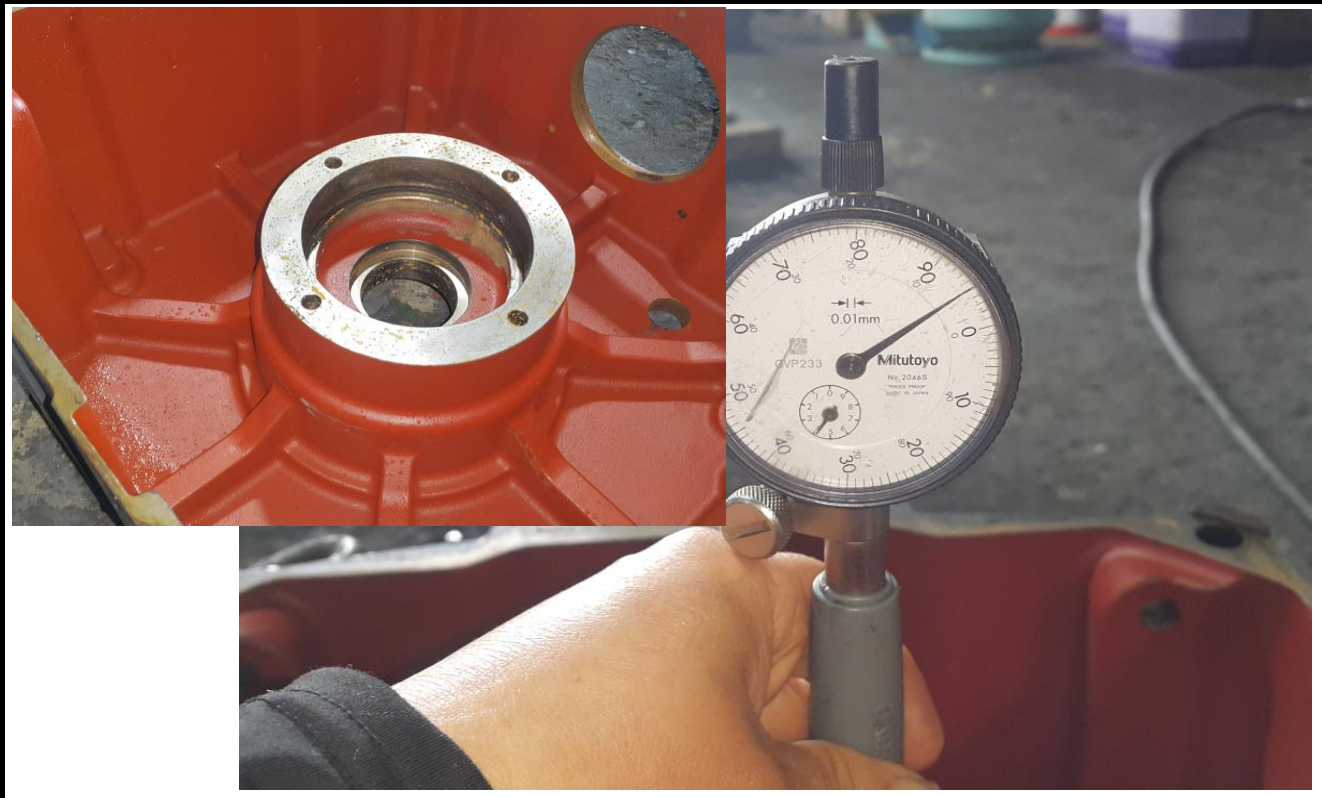
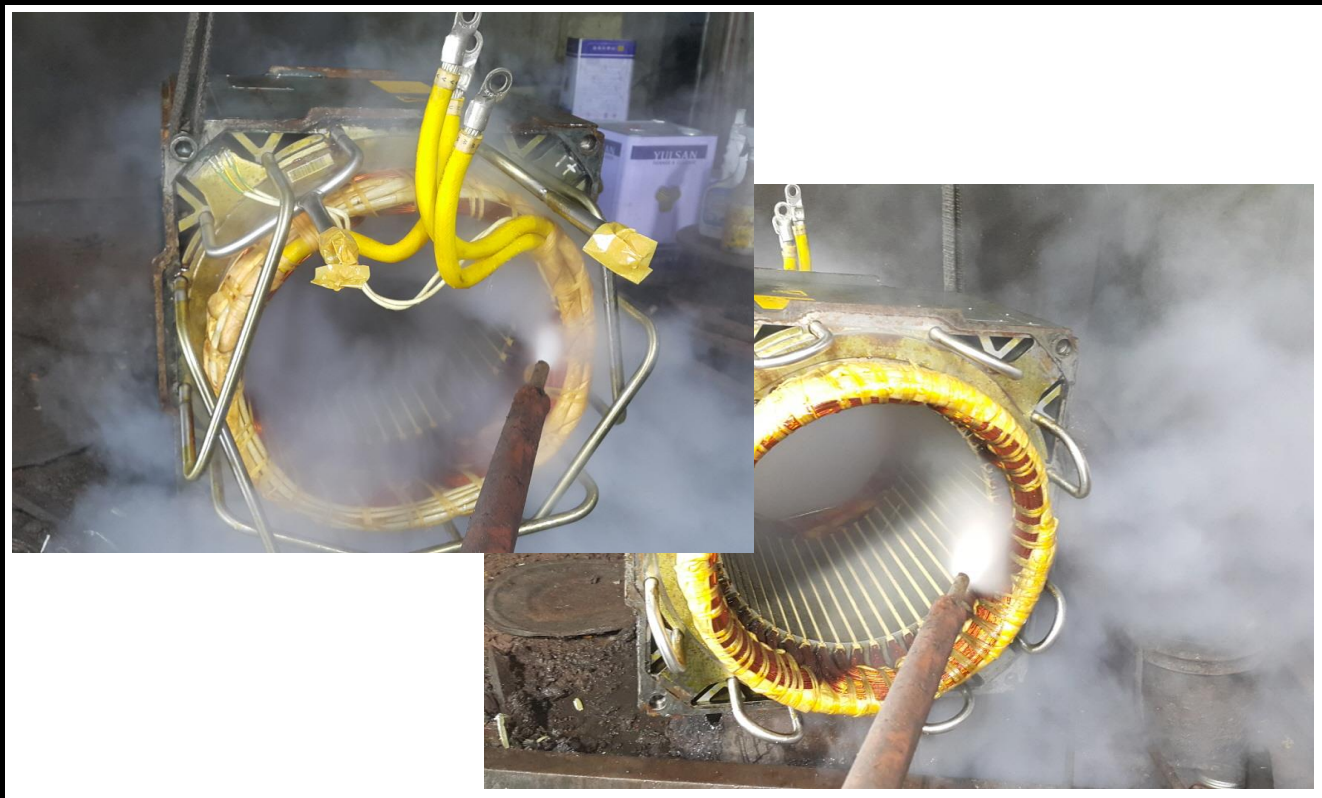
작업공정

VECTOR MOTOR 입고검사



BRACKET

부하측 HOUSING 측정치 7/100로 불량

JIN YANG	작업 공정 사진
작업공정	VECTOR MOTOR 입고검사
	
BRACKET	반 부하측 HOUSING 측정치 5/100로 불량
작업공정	VECTOR MOTOR OVERHAUL
	
STATOR 권체	스팀세척 실시

JIN YANG

작업 공정 사진

작업공정

VECTOR MOTOR OVERHAUL

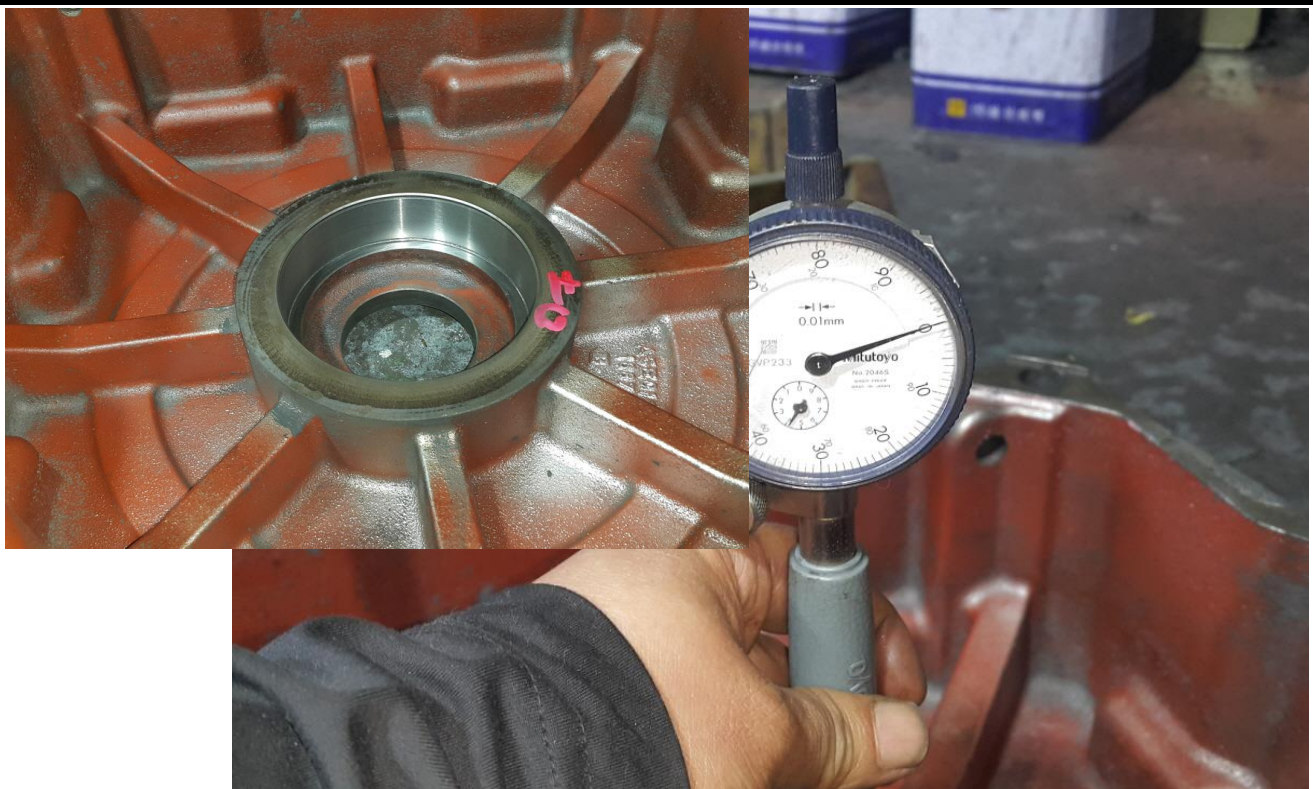


STATOR 권체

세척 후 건조 실시


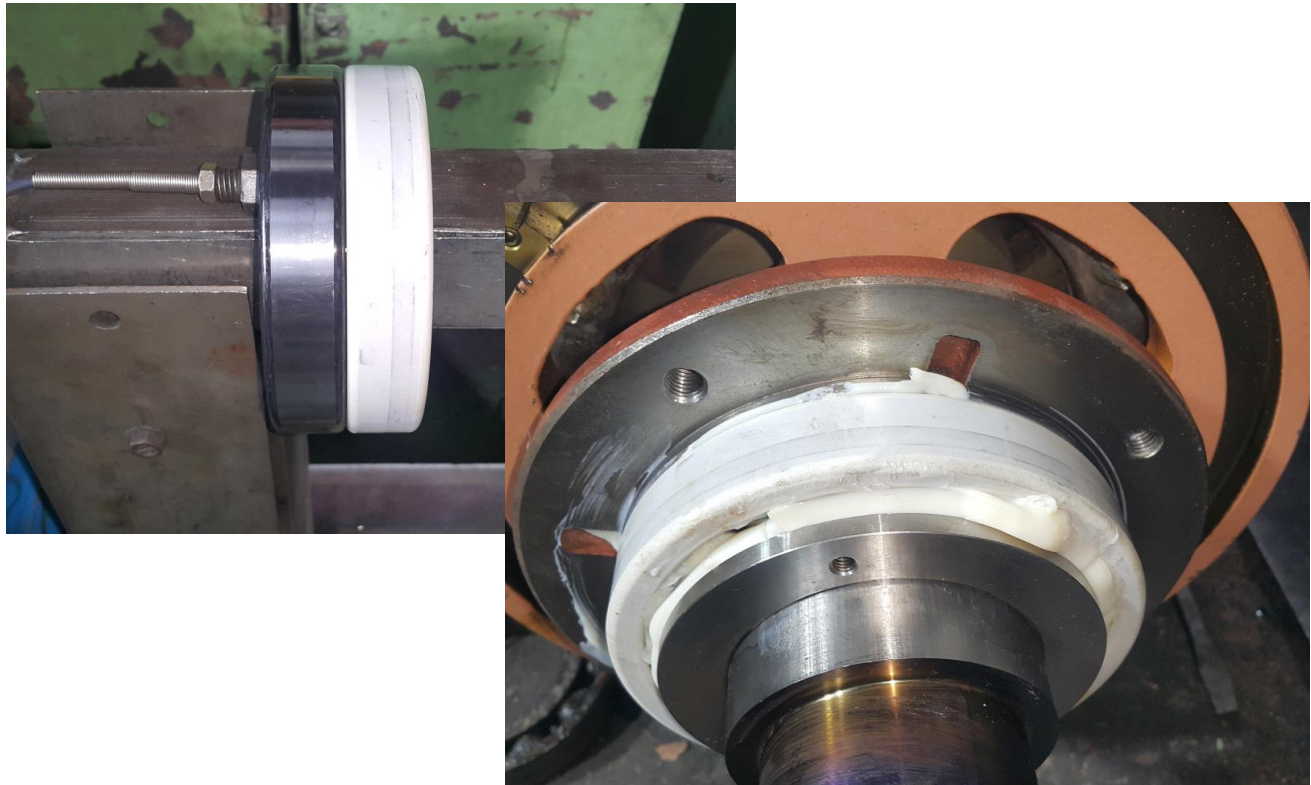
작업공정

VECTOR MOTOR OVERHAUL



BRACKET

부하측 HOUSING METALLIZING 연마 후 검사0/100

JIN YANG	작업 공정 사진
작업공정	VECTOR MOTOR OVERHAUL
	
BRACKET	반 부하측 HOUSING METALLIZING 연마 후 검사0/100
작업공정	VECTOR MOTOR OVERHAUL
	
소모품	BEARING 예열교환 및 GREASE CHARGING 조립실시

JIN YANG

작업 공정 사진

작업공정

VECTOR MOTOR OVERHAUL

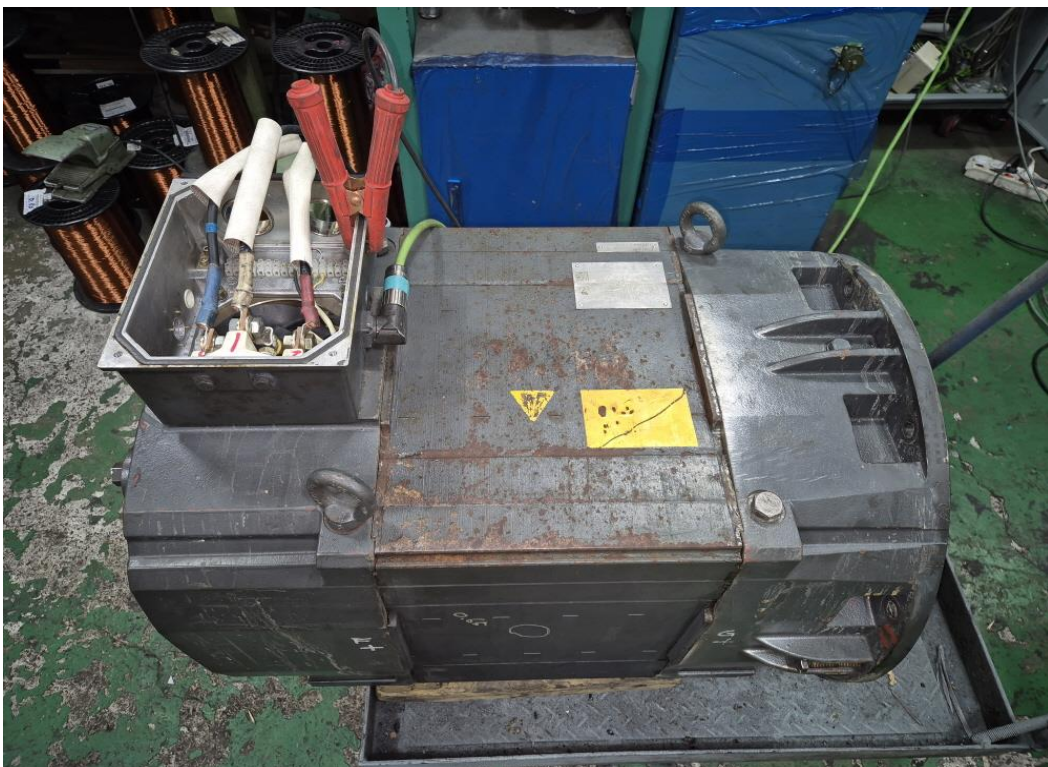


출고검사

절연저항 & 각상별 권선저항

작업공정

VECTOR MOTOR OVERHAUL



출고검사

시운전 TEST 실시

speed-controlled operation

- Drive A - Name
- Configuration
- Analog inputs
- Mechanics
- Limitations
- Digital inputs
- Analog outputs
- Monitoring
- Controller
- Traversing blocks
- Equalization contr
- Angular encoder i
- PROFIBUS parmet
- Spindle position
- Current setpoint
- Speed setpoint fill
- Motor data optimi:
- Password

Reference speed rpm
 correspond to V input voltage

Rotational direction
 Clockwise (positive)
 Counter-clockwise (nega)

Torque: %

Stop with space bar !

Par Op cont

- Controller enable PC (F8)
- Pulse enable module term, 663
- Controller enable term, 65
- Ramp-function generator enable
- Pulse enable NE term, 63/48
- Contr. enable NE term, 64/63

Setpoint 1 rpm
 Actual = rpm
 Torque: Nm
 Parameter set:
 Capacity util:
 Motor current: A

Torque-generating curre A(kms)
 Utilization, motor %

Press F1 to display Help.