

## 작업 공정 사진

고객명: (주)  
공사명: 압축식냉동기 MOTOR보수의 건

규격: 냉동기 COMPRESSOR 저단1호 440V 288KW 2P

REPAIR 내역: 분해 조립 및 조립부품 불순물 CLEANSING  
STATOR REWINDING  
INSULATING VARNISH DIPPING DRYING  
BALANCING 및 UNBALANCE교정  
도급 BEARING 교환  
입 출고검사 시운전 TEST 및 COLOR PAINTING



<http://jinyangmotor.com/>

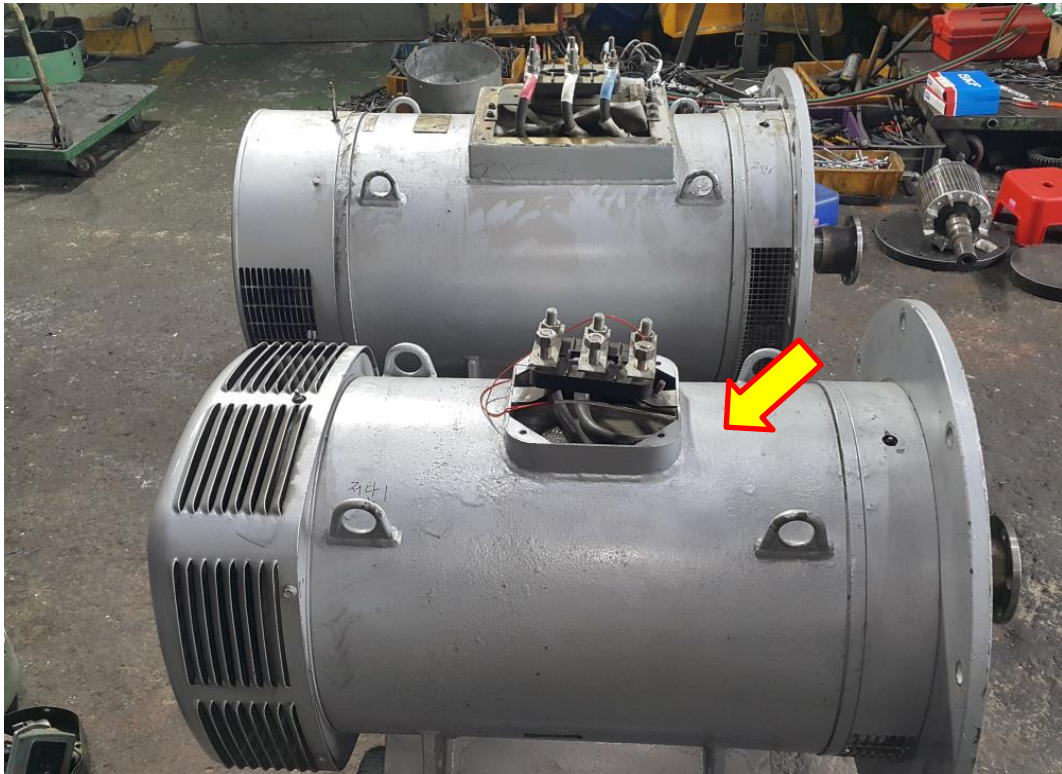


JIN YANG

# 작업 공정 사진

작업공정

AC MOTOR 288KW 2P 입고검사



Ass'y

분해 전



작업공정

AC MOTOR 288KW 2P 입고검사

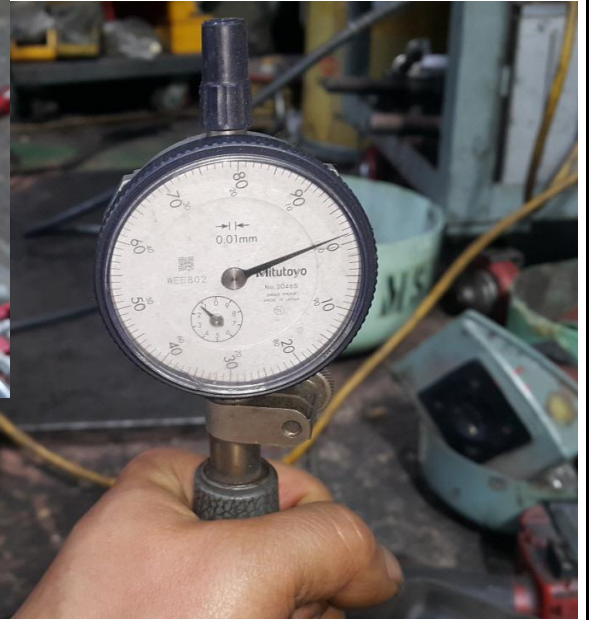


권선검사

절연저항 & 각 상별 권선저항 이상

JIN YANG	작업 공정 사진
작업공정	AC MOTOR 288KW 2P 입고검사
	
STATOR 권체	분해 후
작업공정	AC MOTOR 288KW 2P 입고검사
	
STATOR 권체	소손부는 확인 불가하나 절연파괴 SHORT현상으로보임





JIN YANG	작업 공정 사진
작업공정	AC MOTOR 288KW 2P 입고검사



BRACKET	양측 HOUSING검사 양호
작업공정	AC MOTOR 288KW 2P REWINDING



STATOR권체	재 권선 실시
----------	---------

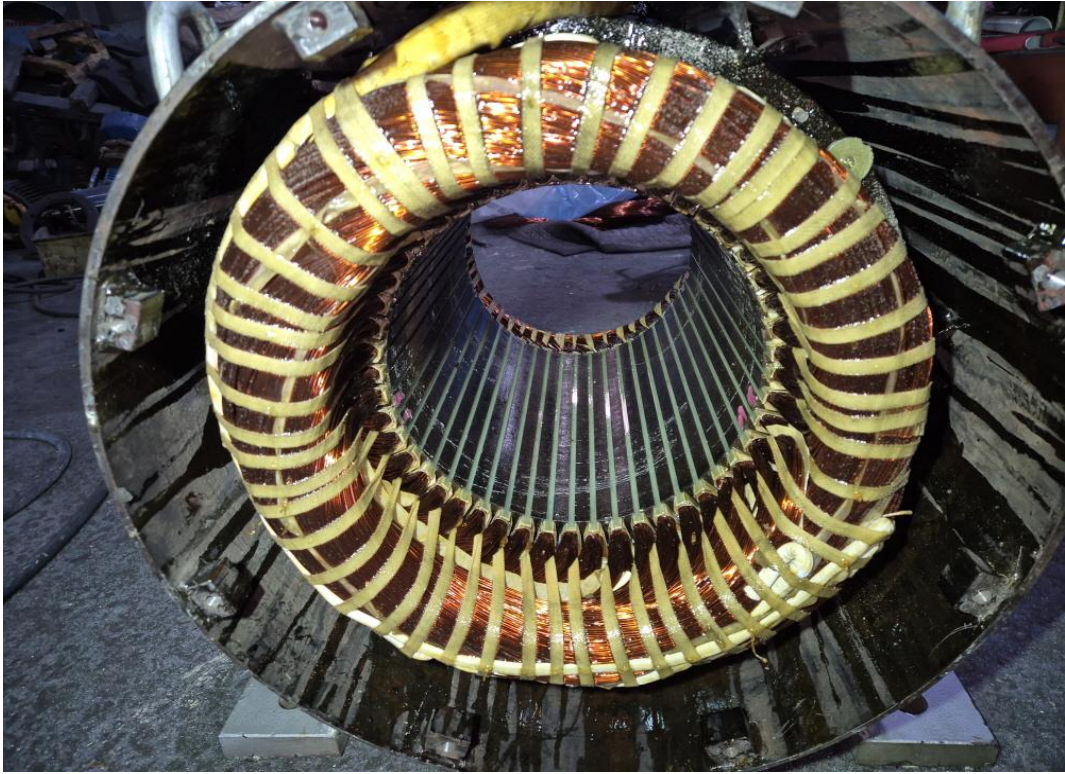
JIN YANG	작업 공정 사진
작업공정	AC MOTOR 288KW 2P REWINDING
	
STATOR권체	결선 및 BANDING 실시
작업공정	AC MOTOR 288KW 2P REWINDING
	
STATOR권체	1,2차 INSULATING VARNISH DIPPING DRYING 실시

JIN YANG

작업 공정 사진

작업공정

AC MOTOR 288KW 2P REWINDING



STATOR권체

절연건조 실시 후

작업공정

AC MOTOR 288KW 2P REWINDING



ROTOR

BALANCING 실시

JIN YANG	작업 공정 사진
작업공정	AC MOTOR 288KW 2P REWINDING



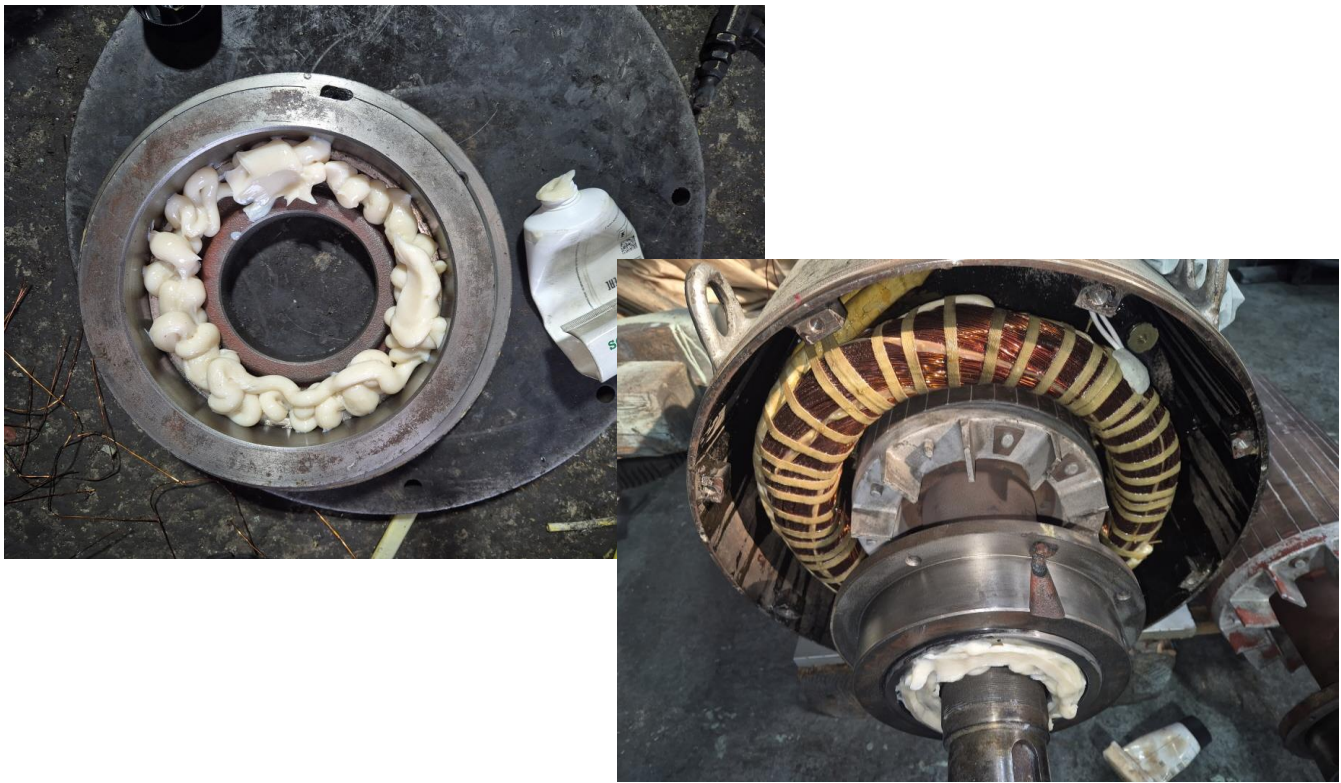
소모품	교환될 BEARING & GREASE
작업공정	AC MOTOR 288KW 2P REWINDING



소모품	GREASE 탈유 방지용 SEAL 교환
-----	-----------------------

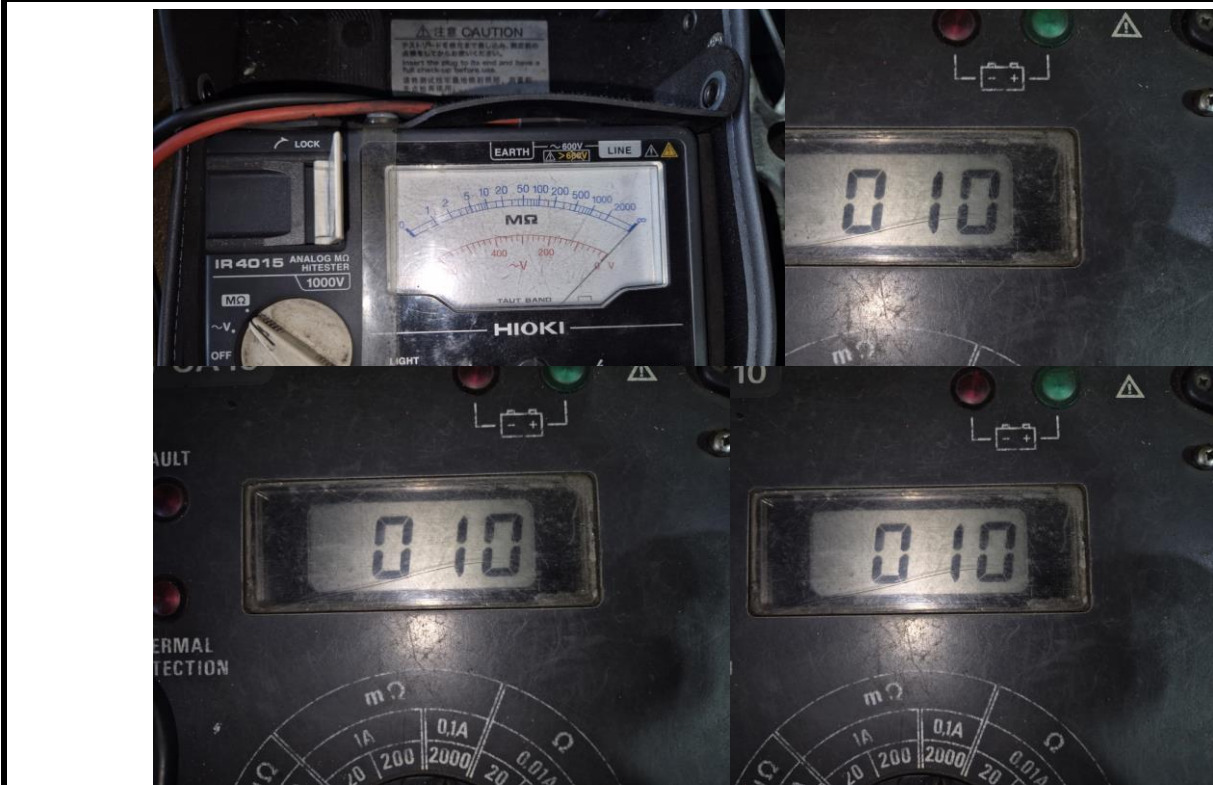
JIN YANG	작업 공정 사진
----------	----------

작업공정	AC MOTOR 288KW 2P REWINDING
------	-----------------------------



소모품	BEARING 예열교환 및 GREASE CHARGING 조립실시
-----	-------------------------------------

작업공정	AC MOTOR 288KW 2P REWINDING
------	-----------------------------



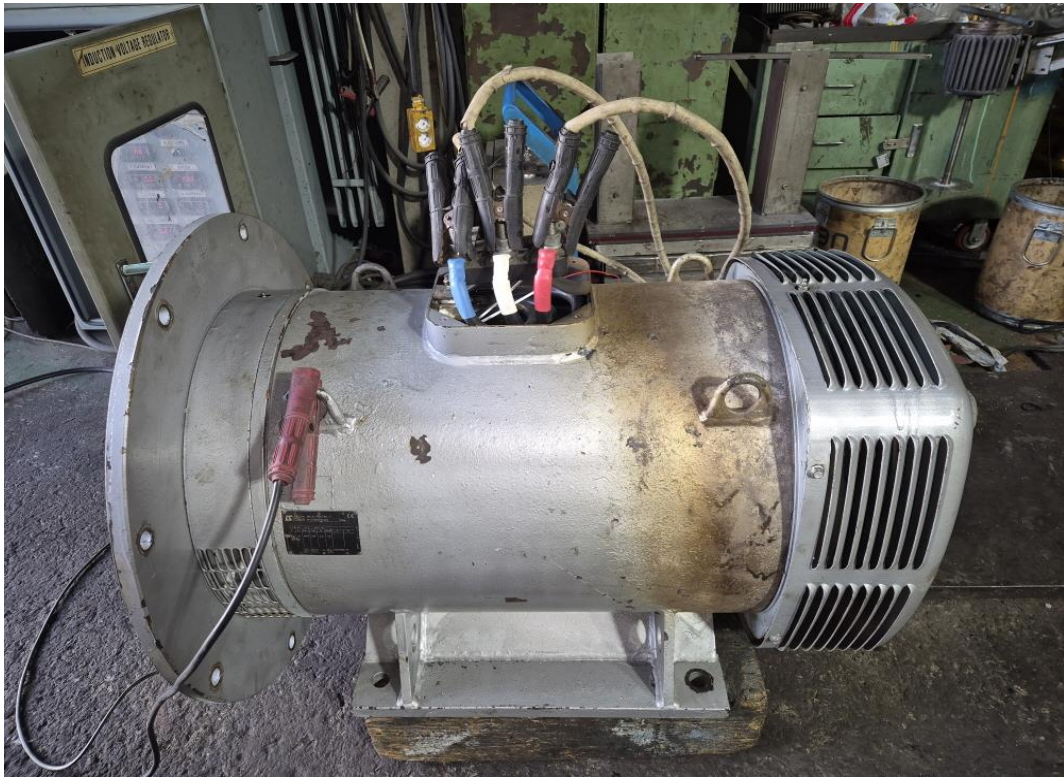
출고검사	절연저항 & 각 상별 권선저항
------	------------------

JIN YANG

작업 공정 사진

작업공정

AC MOTOR 288KW 2P REWINDING

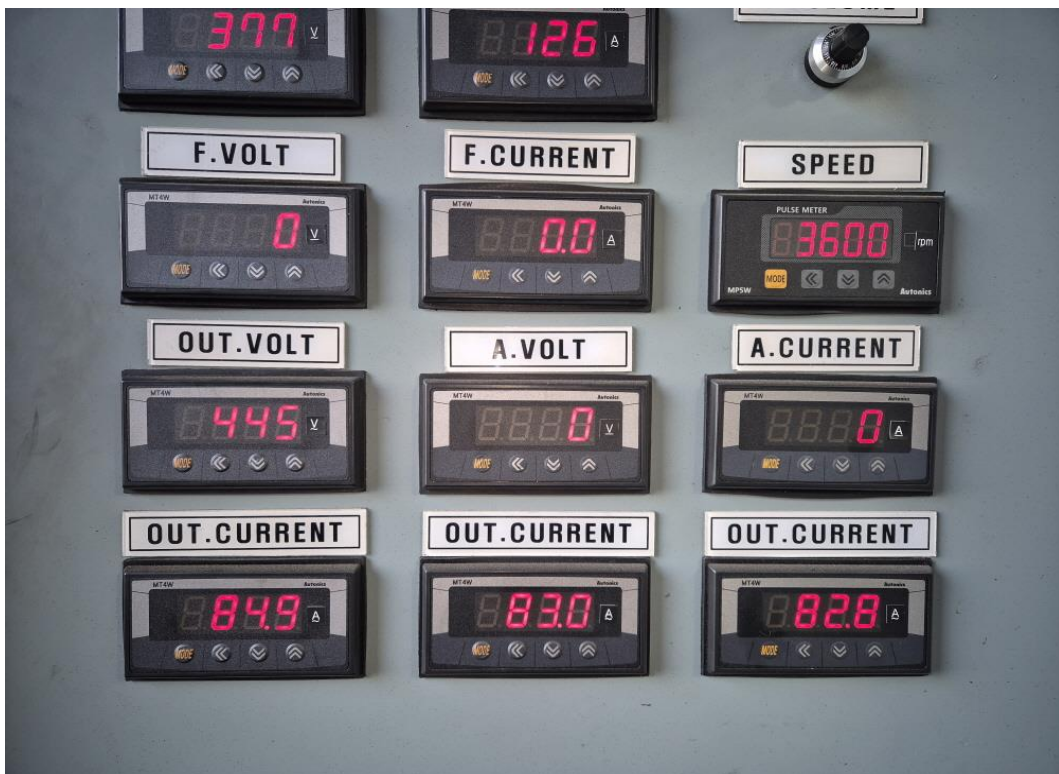


출고검사

시운전 TEST 실시






작업공정

AC MOTOR 288KW 2P REWINDING



출고검사

시운전 TEST 실시 운전 CURRENT

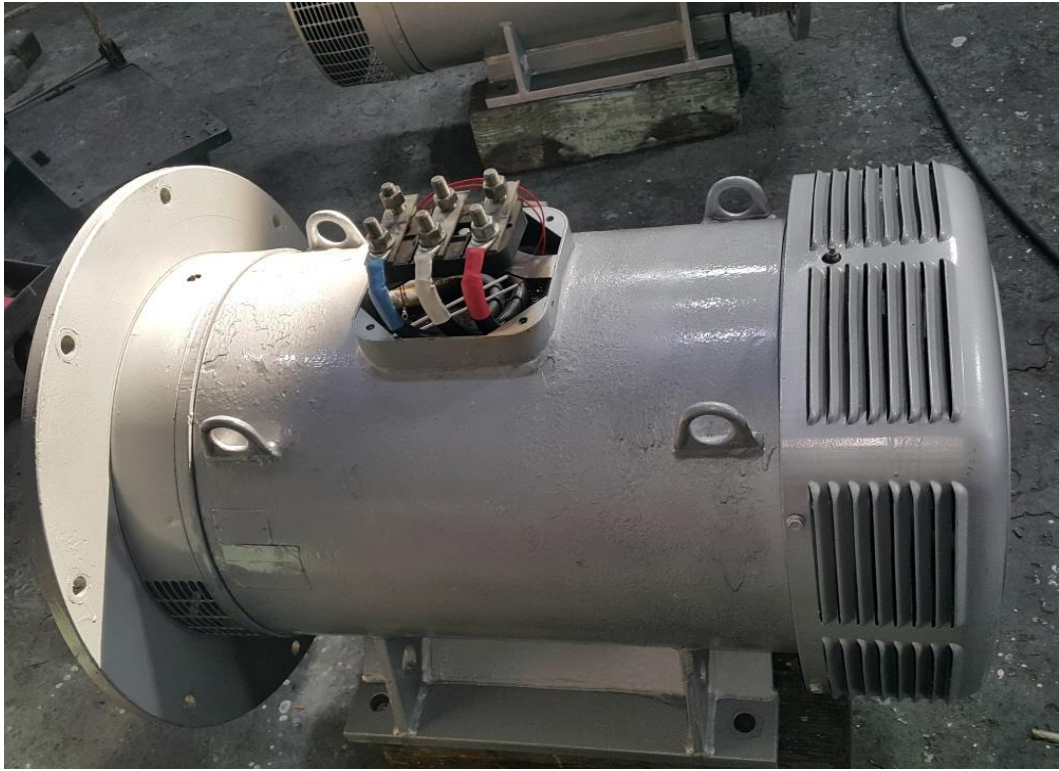
JIN YANG	작업 공정 사진
작업공정	AC MOTOR 288KW 2P REWINDING
 <p>부하측</p>	 <p>반부하측</p>
출고검사	진동검사
작업공정	AC MOTOR 288KW 2P REWINDING
START	  <p>30분후</p>  <p>60분후</p>
출고검사	BEARING 온도상승 검사

JIN YANG

작업 공정 사진

작업공정

AC MOTOR 288KW 2P REWINDING



출고검사 후

COLOR PAINTING

# BALANCING INSPECTION REPORT

## SETUP

PROJECT NO: 냉동 COMP MOTOR 저단 1호	
CUSTOMER :	
NO : 0	
TYPE : 0	
OPERATOR : 0	
PART NAME : AC ROTOR 288KW 2P	TEST TIME : 2026.03.07 09:51:50
GRADE : G6.3	RATING SPEED : 3600 rpm
WEIGHT : 194.000 kg	TESTING SPEED : 565 rpm
RADIUS : 113 mm 113 mm	CORRECTION : ADD
ACCEPTABLE UNBALANCE(Unit:g)	
PLANE1 : 14.400	PLANE2 : 14.400

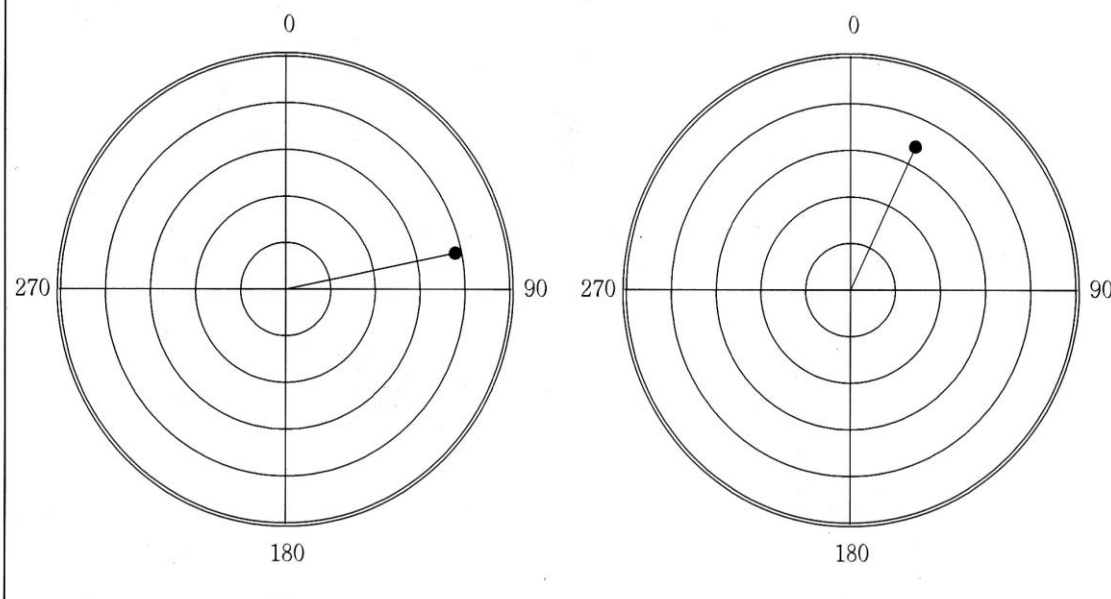
## INITIAL UNBALANCE

	PLANE1	PLANE2
UNBALANCE	7.700 g	6.800 g
ANGLE	78 deg	25 deg
RESULT	OK	OK

## CORRECT UNBALANCE

	PLANE1	PLANE2
UNBALANCE	7.700 g	6.800 g
ANGLE	78 deg	25 deg
RESULT	OK	OK

## CORRECT UNBALANCE GRAPH( max = 10.0 g )



진양전기

경남 창원시 마산회원구 내서읍 중리공단로3길 17-2

TEL : 055-231-9318 FAX : 055-231-9314

E-mail : jinyang2913@naver.com