

# 작업공정사진철

고객명: (주)

공사명: AC SPINDLE VECTOR MOTOR OVERHAUL

규격: AC 105KW 1500~6000RPM

REPAIR 내역: 분해 및 불순물 CLEANSING DRYING  
INSULATING VARNISH DIPPING DRYING  
반 부하측 HOUSING METALLIZING 연마  
BEARING교환 조립  
BLOWER 보수  
출고검사 시운전 TEST



<http://jinyangmotor.com/>



JIN YANG

작업 공정 사진

작업공정

VECTOR MOTOR 예방정비



Ass'y

분해 전

작업공정

VECTOR MOTOR 예방정비



권선 검사

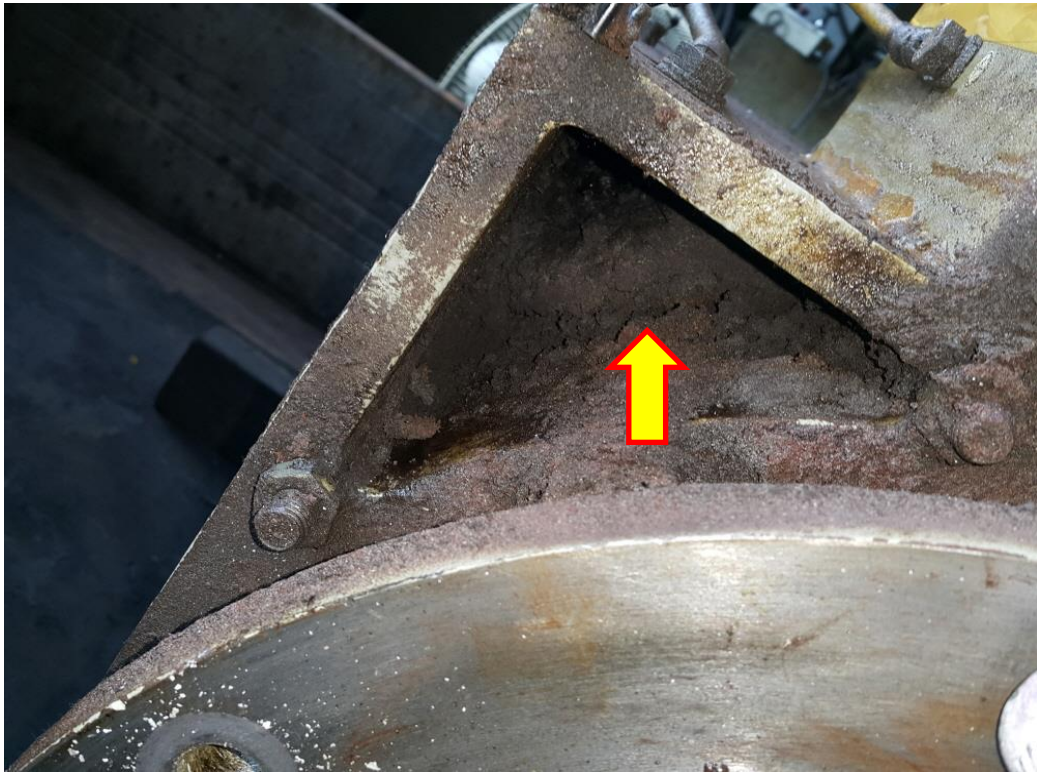
절연저항 & 각 상 Δ시 권선저항 동일

JIN YANG

작업 공정 사진

작업공정

VECTOR MOTOR 예방정비

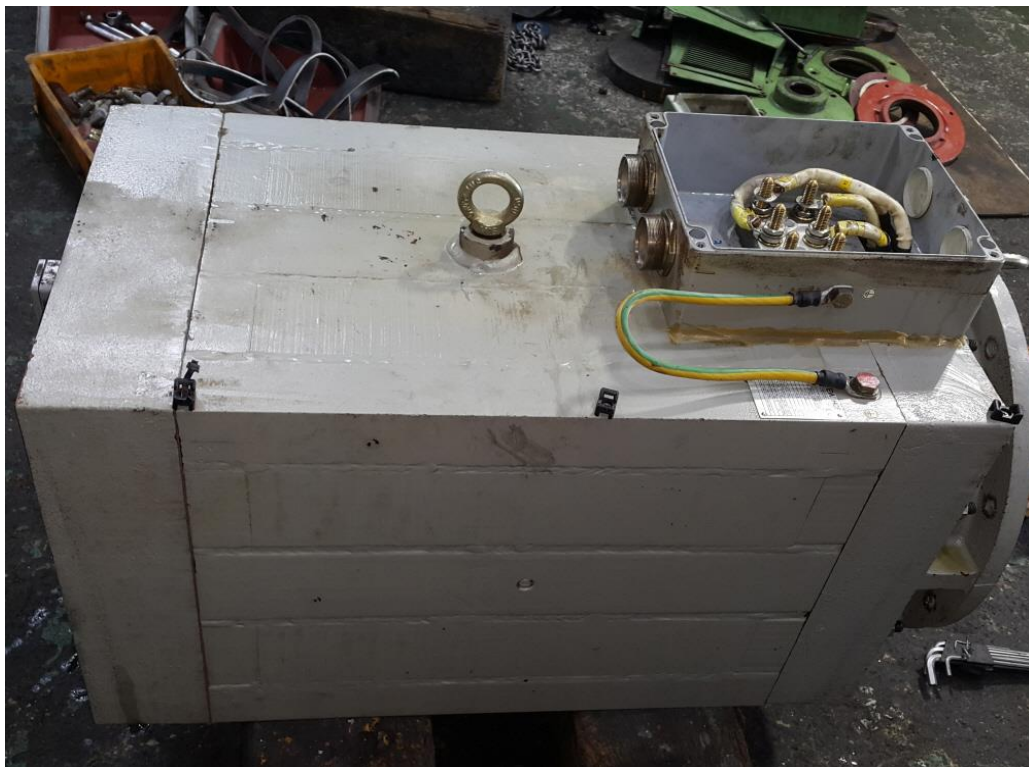


냉각 구

냉각 동풍구 막힘



작업공정





VECTOR MOTOR 예방정비



권체

외부 기름때 세척 후 분해실시

JIN YANG	작업 공정 사진
작업공정	VECTOR MOTOR 예방정비
	
Ass'y	권체 분리 후
작업공정	VECTOR MOTOR 예방정비
	
권체	권선상태 양호

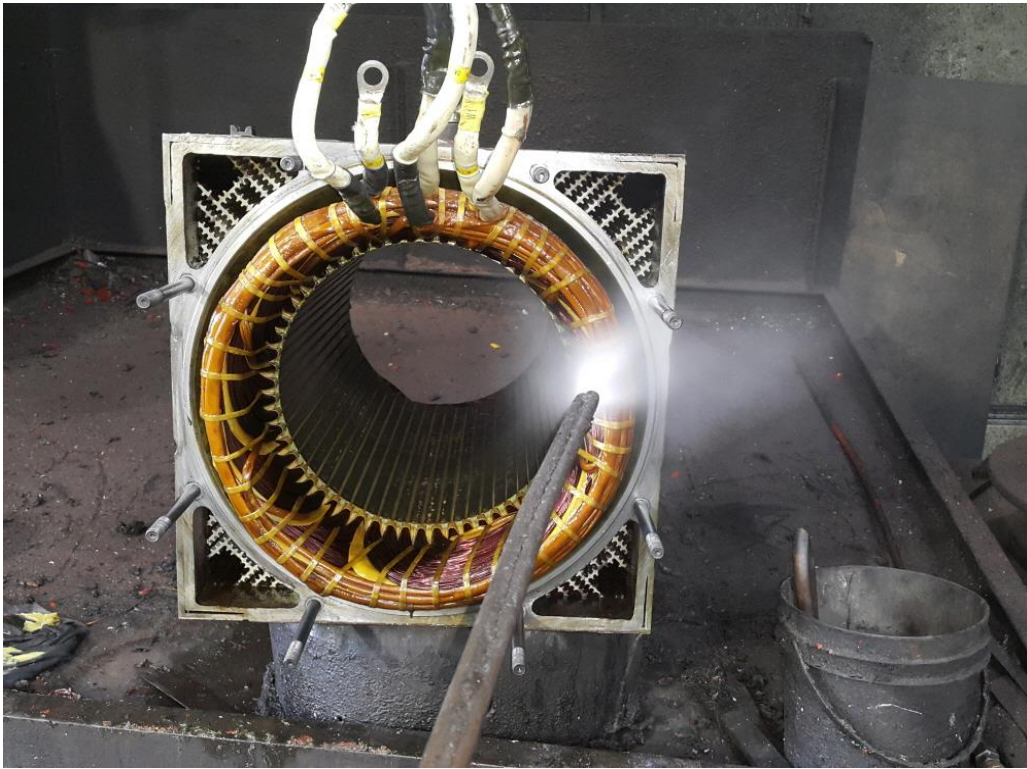
JIN YANG	작업 공정 사진
작업공정	VECTOR MOTOR 예방정비
	
BRACKET	부하측 HOUSING검사 측정치 1/100로 양호
작업공정	VECTOR MOTOR 예방정비
	
BRACKET	반 부하측 HOUSING검사 측정치 5/100로 불량

JIN YANG

작업 공정 사진

작업공정

VECTOR MOTOR 예방정비

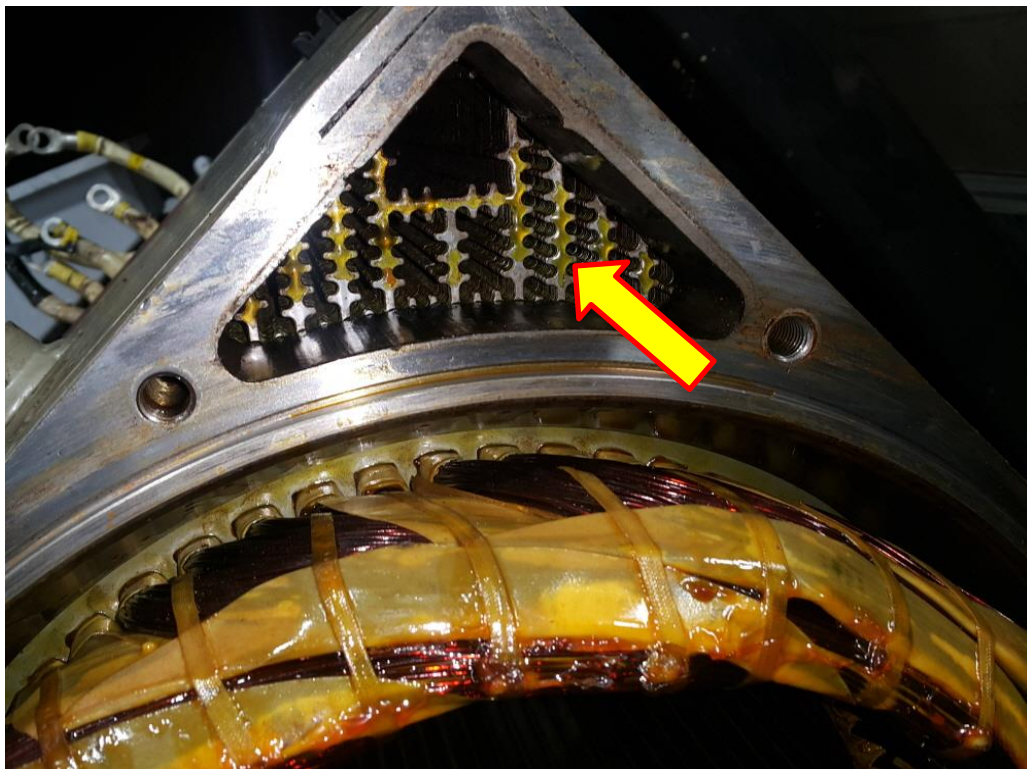


STATOR 권체

스팀세척 실시

작업공정

VECTOR MOTOR 예방정비



STATOR 권체

냉각 통풍구 세척실시 후

JIN YANG

작업 공정 사진

작업공정

VECTOR MOTOR 예방정비

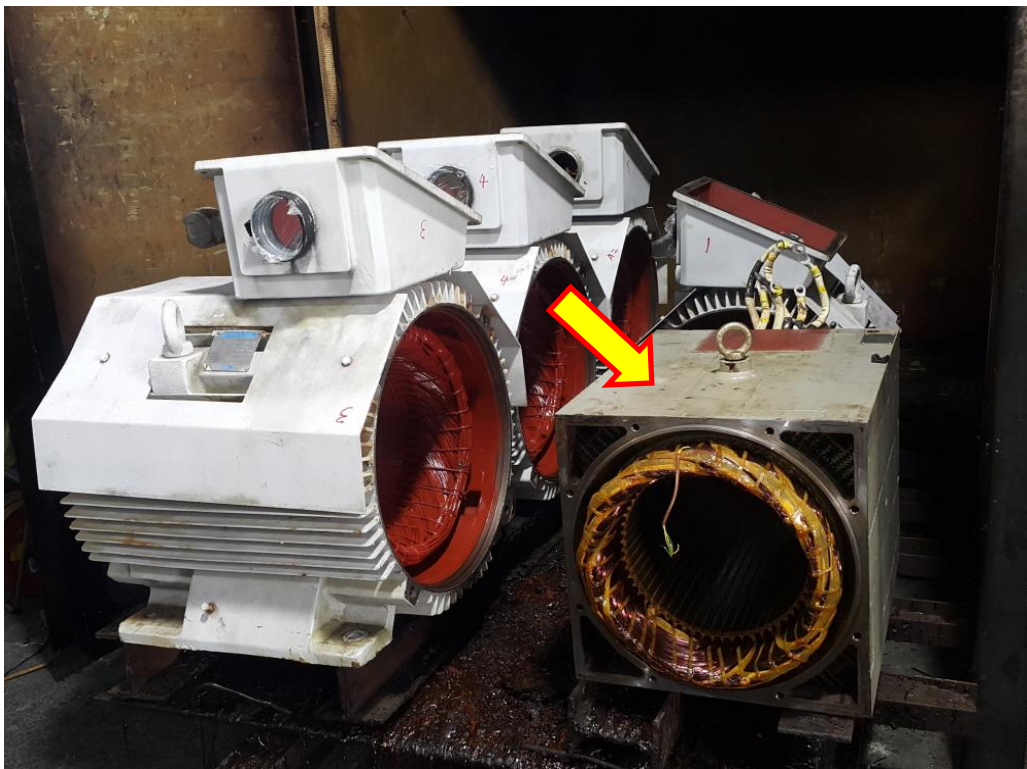


조립부품

세척 실시


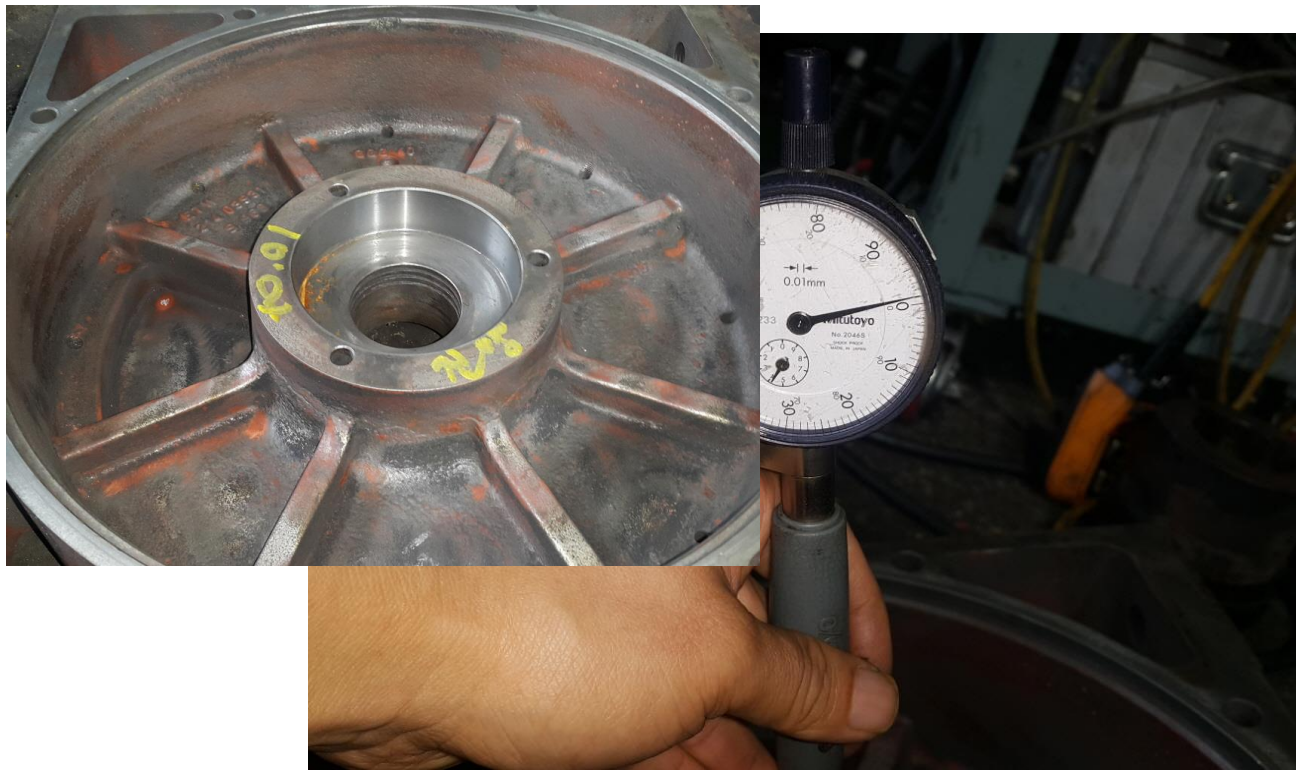
작업공정

VECTOR MOTOR 예방정비



STATOR 권체

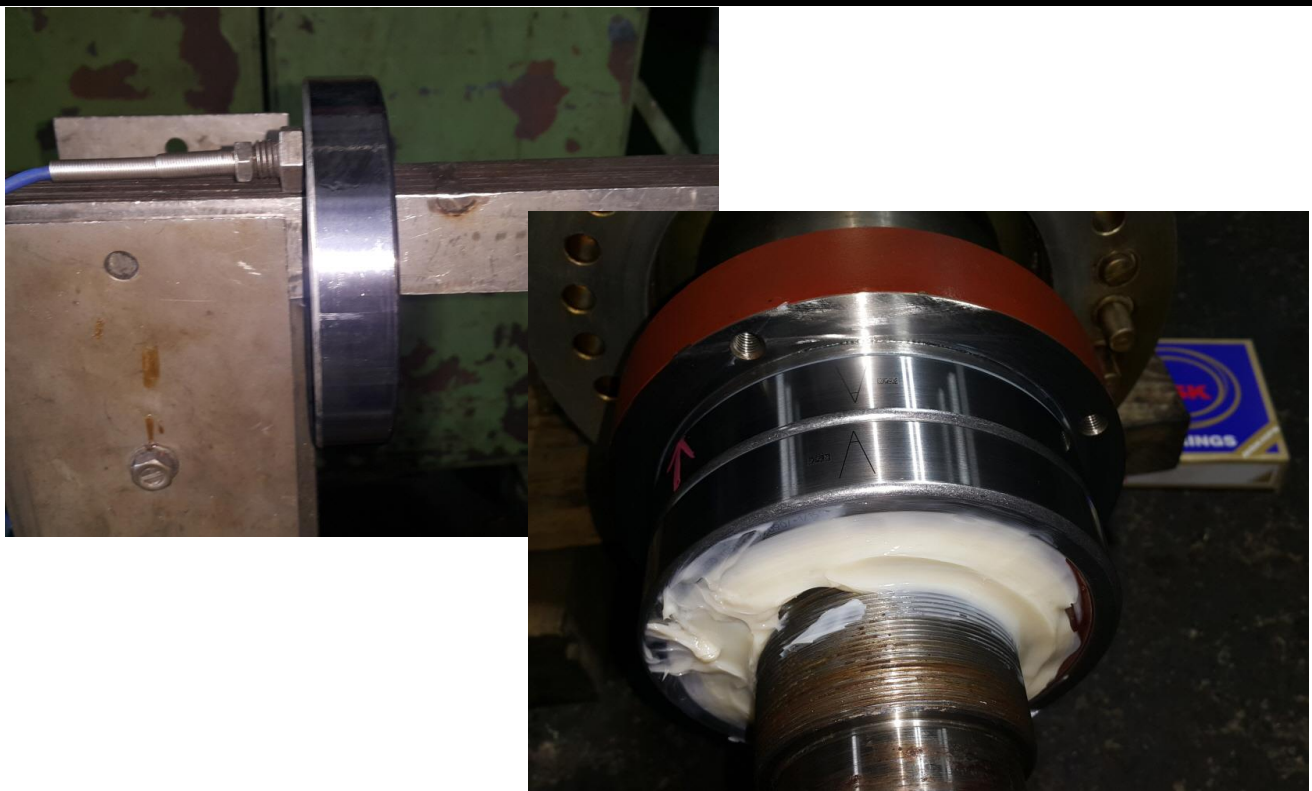
세척 후 건조실시

JIN YANG	작업 공정 사진
작업공정	VECTOR MOTOR 예방정비
	
조립부품	ENCODER 와 CABLE이 기름을 먹어 흘러나뎀
작업공정	VECTOR MOTOR 예방정비
	
BRACKET	반 부하측 HOUSING METALLIZING 연마 후 검사 1/100

JIN YANG	작업 공정 사진
작업공정	VECTOR MOTOR 예방정비



소모품	교환될 BEARING 및 BEARING전용 GREASE
작업공정	VECTOR MOTOR 예방정비



소모품	BEARING 예열교환 및 GREASE CHARGING 조립실시
-----	-------------------------------------

JIN YANG

작업 공정 사진

작업공정

VECTOR MOTOR 예방정비



출고 검사

절연저항 & 각 상 Δ시 권선저항

작업공정

VECTOR MOTOR 예방정비



Ass'y

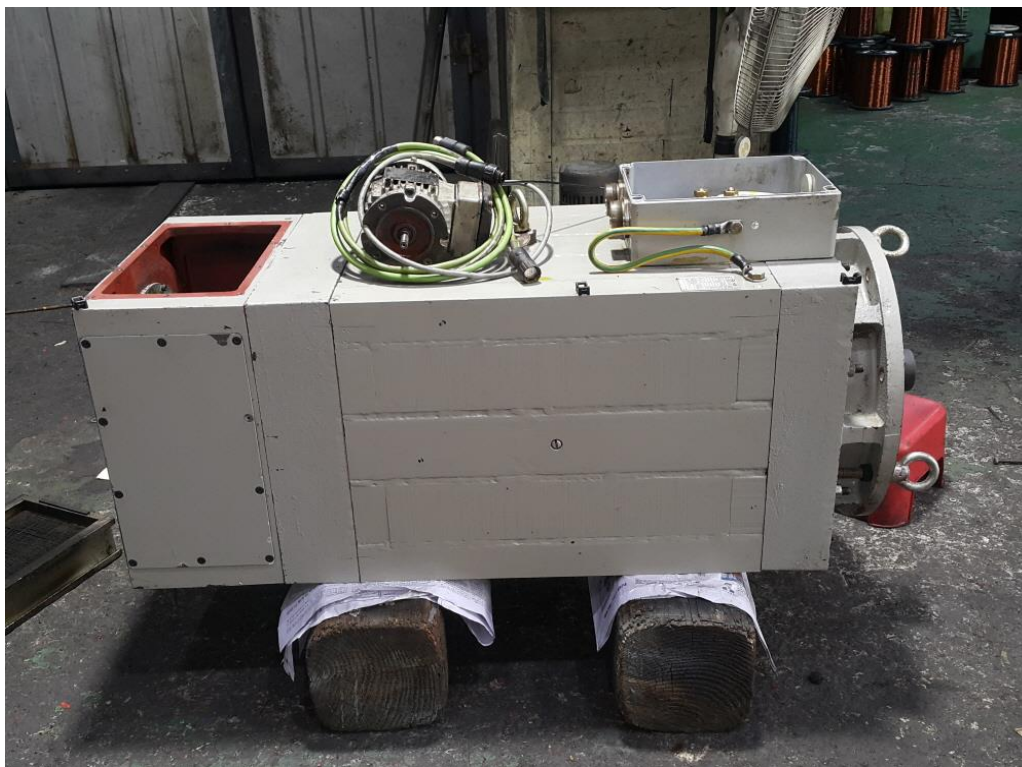
시운전 TEST 실시

JIN YANG

작업 공정 사진

작업공정

VECTOR MOTOR 예방정비



Ass'y

시운전 TEST 실시 후

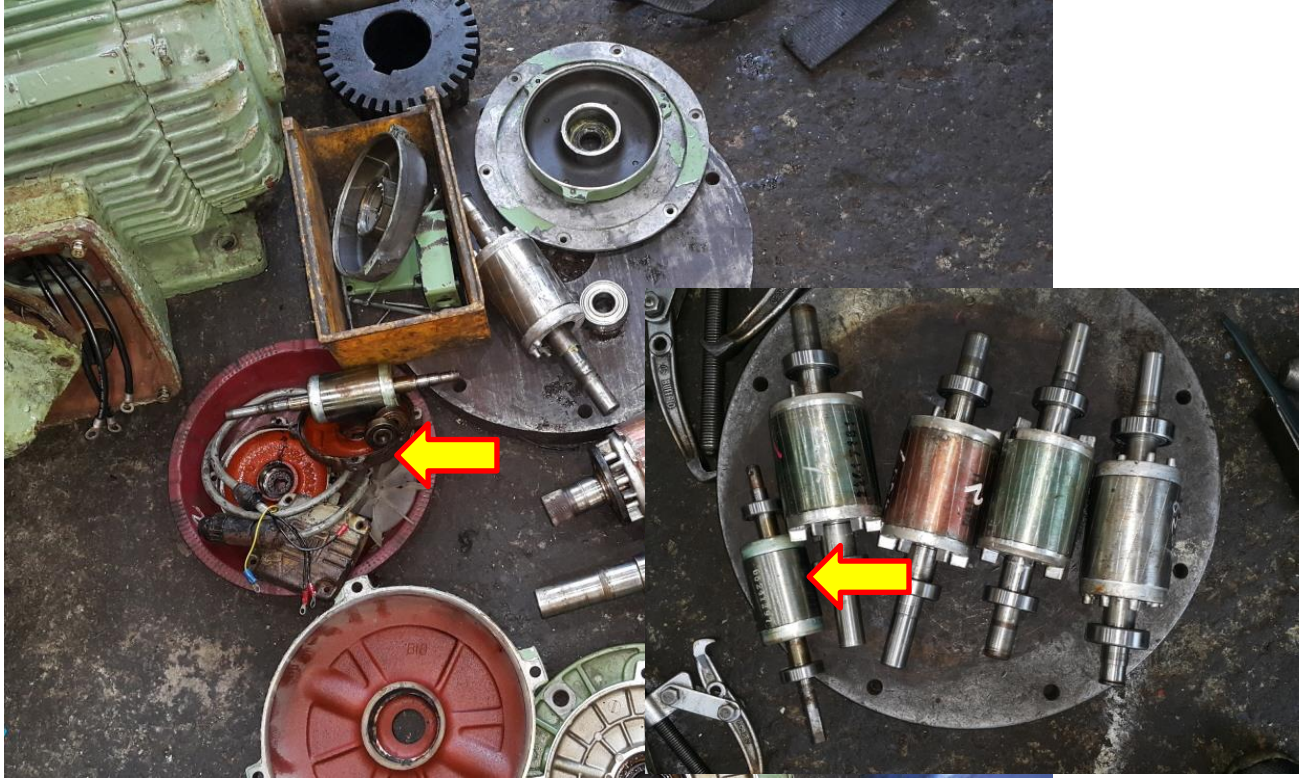

작업공정

VECTOR MOTOR 예방정비



FAN MOTOR

분해 전

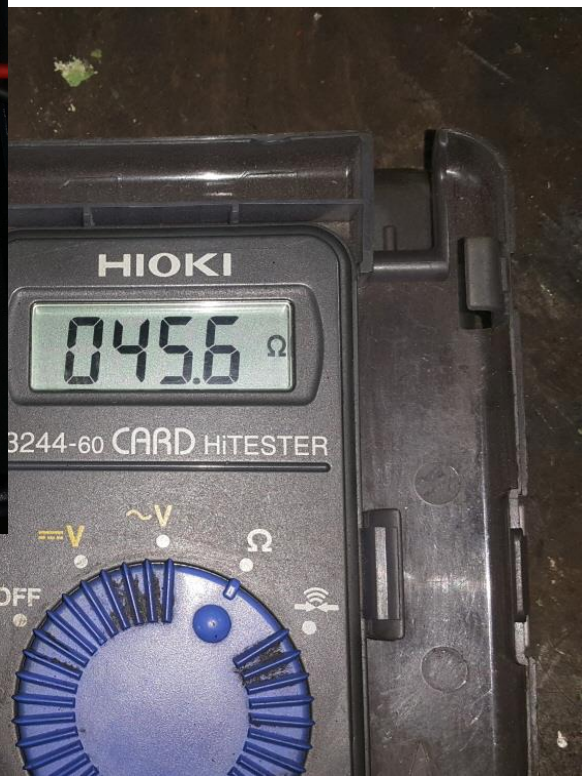
JIN YANG	작업 공정 사진
작업공정	VECTOR MOTOR 예방정비
	
FAN MOTOR	분해 BEARING교환 실시
작업공정	VECTOR MOTOR 예방정비
	
부하 측	마모된 HOUSING 보수 후

JIN YANG

작업 공정 사진

작업공정

VECTOR MOTOR 예방정비



FAN MOTOR

절연저항 & 각 상별 권선저항 동일

작업공정

VECTOR MOTOR 예방정비



5회감아 440V 실 CURRENT 0.44A



FAN MOTOR

시운전 TEST 실시

# 시운전 TEST 운전 MONITORING

The screenshot displays the SimoCom U (standalone) - Drive A software interface. The top menu bar includes File, Edit, Start up, Operator control, Diagnostics, Options, and Help. A red status bar at the top right reads: "PC has Master Control for Drive A => Only term: 663 (pulse enable) and term: 65.x (control enable) are evaluated (!)".

The main window is titled "Drive A - Name" and contains a tree view on the left with the following items: Configuration, Analog inputs, Mechanics, Limitations, Digital inputs, Analog outputs, Monitoring, Controller, Traversing blocks, Equalization contr, Angular encoder i, PROFIBUS paramet, Spindle positionin, Current setpoint fill, Speed setpoint fill, Motor data optimiz, and Password.

The central area shows the following parameters and controls:

- Reference speed: 1500 rpm
- correspond to: 3.00 V input voltage
- Rotational direction:  Clockwise (positive),  Counter clockwise (nega)
- Torque: 50.00 %
- Warning icons: Stop with space bar !

At the bottom right, there are controls for Start (F9) (Space bar) and Stop (via signal), and an Override section with a 100% slider set to 1500 rpm and a Traversing dialog button.

The bottom left panel shows the "STOP at the program change" status and "Overview status" for Drive A. The status indicators are as follows:

Indicator	Value
Controller enable PC (F8)	<input checked="" type="checkbox"/>
Pulse enable module term: 663	<input checked="" type="checkbox"/>
Speed: 1500.0	Actual = 1500.0 rpm
Controller enable term: 65	<input checked="" type="checkbox"/>
Torque: 13.1	Motor: 1 Nm
Ramp-function generator enable	<input checked="" type="checkbox"/>
Parameter set: 0	Motor current: 53.94 A
Pulse enable NE term: 63/48	
Contr. enable NE term: 64/63	

The Windows taskbar at the bottom shows the date and time as 2024-08-29 오후 3:45:32.

