

작업공정사진철

고객명: (주)
공사명: 터빈공장 HBM(H201) SPINDLE MOTOR

규격: VECTOR MOTOR 75KW 1500~5000RPM(PH6186)

REPAIR 내역: 분해 및 불순물 CLEANSING DRYING
INSULATING VARNISH DIPPING DRYING
BLOWER MOTOR보수
BEARING교환
입 출고검사 시운전 TEST



<http://jinyangmotor.com/>



JIN YANG

작업 공정 사진

작업공정

VECTOR MOTOR 입고검사



Ass'y

분해 전

작업공정

VECTOR MOTOR 입고검사



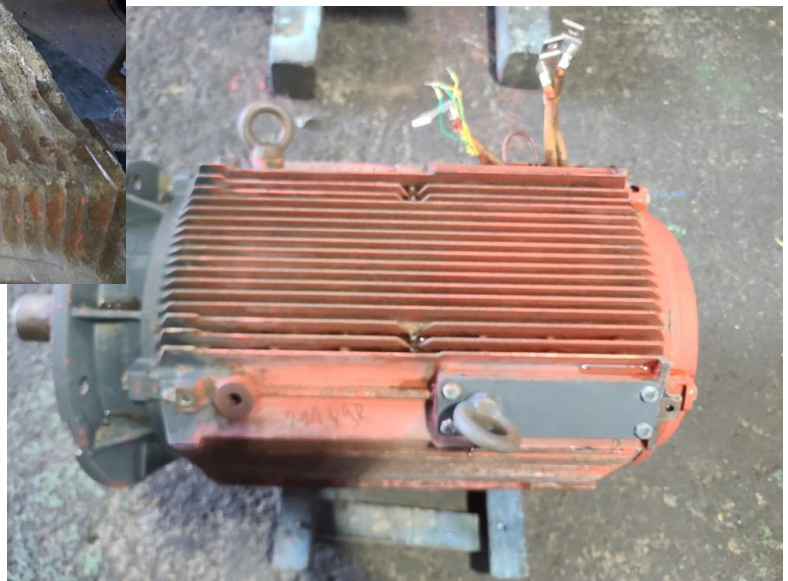
권선검사

절연저항 & 각 상별 권선저항 동일


JIN YANG	작업 공정 사진
작업공정	VECTOR MOTOR 입고검사



Ass'y	냉각구 마힘
작업공정	VECTOR MOTOR 입고검사



STATOR 권체	고착된 불순물 세척 후 분해 실시
-----------	--------------------

JIN YANG	작업 공정 사진
작업공정	VECTOR MOTOR 입고검사
	
HOUSING 검사	2/100이하로 양호
작업공정	VECTOR MOTOR RECONDITION
	
STATOR 권체	권선 세척 실시

JIN YANG

작업 공정 사진

작업공정

VECTOR MOTOR RECONDITION



STATOR 권체

세척 후 건조실시



작업공정

VECTOR MOTOR RECONDITION



냉각 FAN

세척건조 실시

JIN YANG	작업 공정 사진
작업공정	VECTOR MOTOR RECONDITION
	
냉각 FAN	BEARING교환 조립실시
작업공정	VECTOR MOTOR RECONDITION
	
냉각 FAN	절연저항 & 각상별 권선저항

JIN YANG

작업 공정 사진

작업공정

VECTOR MOTOR RECONDITION



냉각 FAN

시운전 TEST 실시

작업공정

VECTOR MOTOR RECONDITION



냉각 FAN

시운전 TEST 운전 CURRENT

JIN YANG

작업 공정 사진

작업공정

VECTOR MOTOR RECONDITION



출고검사

절연저항 & 각 상별 권선저항

작업공정

VECTOR MOTOR RECONDITION



Ass'y

출고검사 후

시운전 TEST 운전 MONITORING

Simocom U (standalone) - Drive A

File Edit Start up Operator control Diagnostics Options Help

PC has Master Control for Drive A => Only term: 663 (pulse enable) and term: 65 x (control enable) are evaluated !!!

speed-controlled operation (closed-loop controlled, without er

Drive A - Name

- Configuration
- Analog inputs
- Mechanics
- Limitations
- Digital inputs
- Analog outputs
- Monitoring
- Controller
- Traversing blocks
- Equalization contr
- Angular encoder i
- PROFIBUS paramet
- Spindle positionin
- Current setpoint fill
- Speed setpoint fill
- Motor data optimi:
- Password

Reference speed correspond to: 1500 rpm, 2.70 V input voltage

Rotational direction: Clockwise (positive), Counter clockwise (nega)

Torque: 50.00 %

Stop with space bar !

Setpoint: 1500.0 rpm, Actual = 1500.0 rpm

Speed: 9.1 Nm, Motor: 1

Parameter set: 0, Motor current: 46.26 A

Capacity util.: A

Overview status

Press F1 to display Help.

시작 Simocom U (stan...

2023-05-24 오후 3:17:48

Start (F9) (Space bar), Stop (Space bar), Start via signal, Override: 100%, 1500 rpm, Traversing dialog