

# 작업공정사진철

고객명: (주)

공사명: 터빈공장 VBM(V102) ROTARY TABLE구동 MOTOR

규격: VECTOR MOTOR 136KW 1000~1350RPM

REPAIR 내역: 분해 및 불순물 CLEANSING DRYING  
STATOR REWINDING  
INSULATING VARNISH DIPPING DRYING  
BALANCING 및 UNBALANCE교정  
BLOWER MOTOR보수  
BEARING교환  
입 출고검사 시운전 TEST 및 COLOR PAINTING



<http://jinyangmotor.com/>

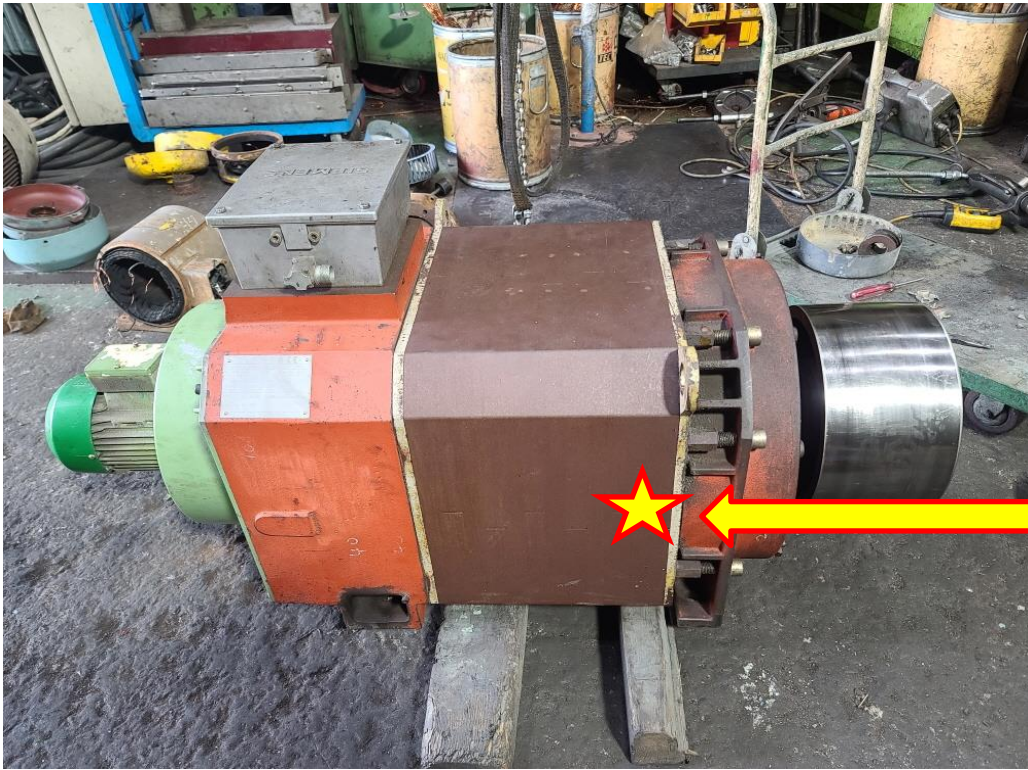


JIN YANG

작업 공정 사진

작업공정

VECTOR MOTOR 입고검사



마찰부  
위치

Ass'y

분해 전

작업공정

VECTOR MOTOR 입고검사



권선검사

절연저항 & 각 상별 권선저항 이상

JIN YANG	작업 공정 사진
----------	----------

작업공정	VECTOR MOTOR 입고검사
------	-------------------



STATOR권선	ROTOR 와 마찰손 BELT 장력부가 아닐까 짐작되고 BEARING
----------	--

및 HOUSING상태는 검사결과 문제가 없었을 것으로 판단 됨

작업공정	VECTOR MOTOR 입고검사
------	-------------------



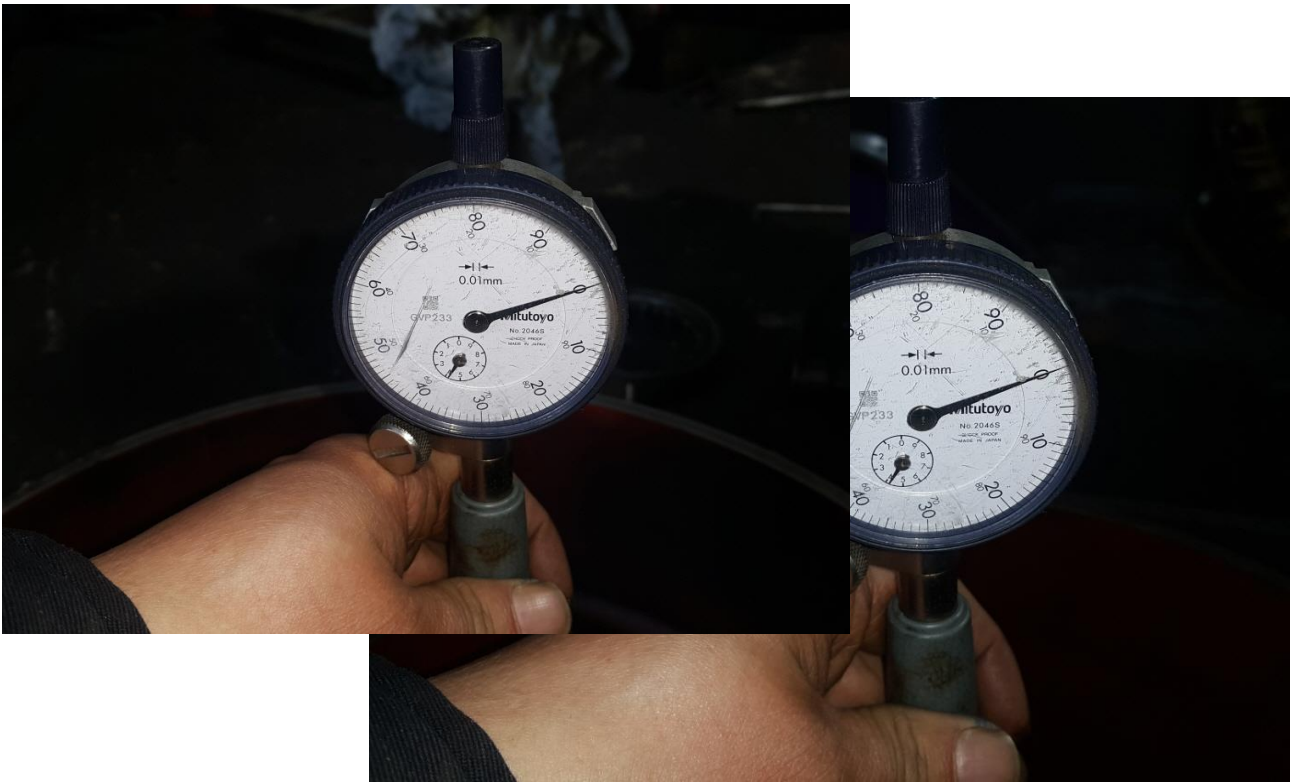
ROTOR	분해 후
-------	------

JIN YANG

작업 공정 사진

작업공정

VECTOR MOTOR 입고검사



BRACKET

양측 HOUSING 검사 측정치 0/100로 양호

작업공정

VECTOR MOTOR REWINDING



STATOR권체

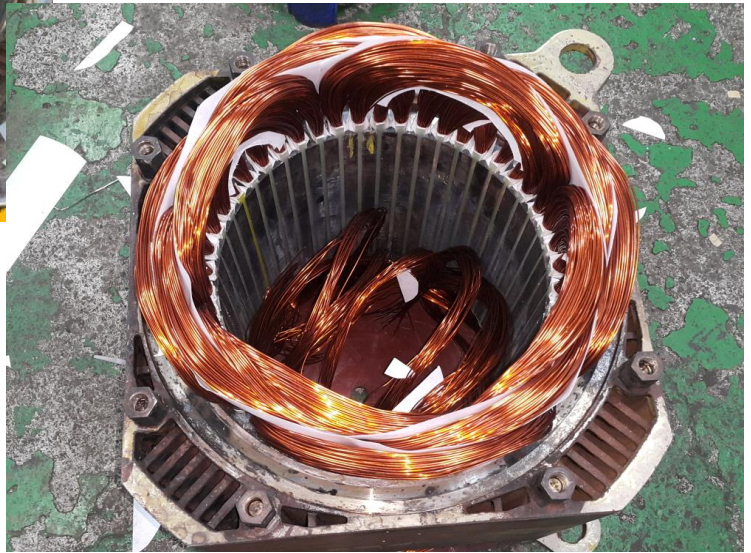
세척 건조 후 권선 해체

JIN YANG

# 작업 공정 사진

작업공정

VECTOR MOTOR REWINDING

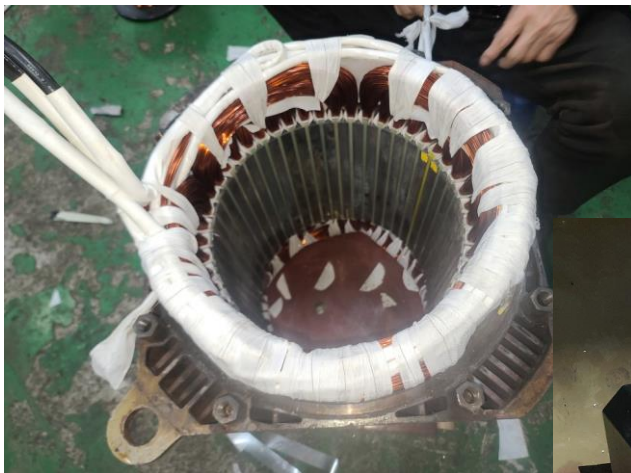


STATOR 권체

재 권선 실시

작업공정

VECTOR MOTOR REWINDING



STATOR 권체

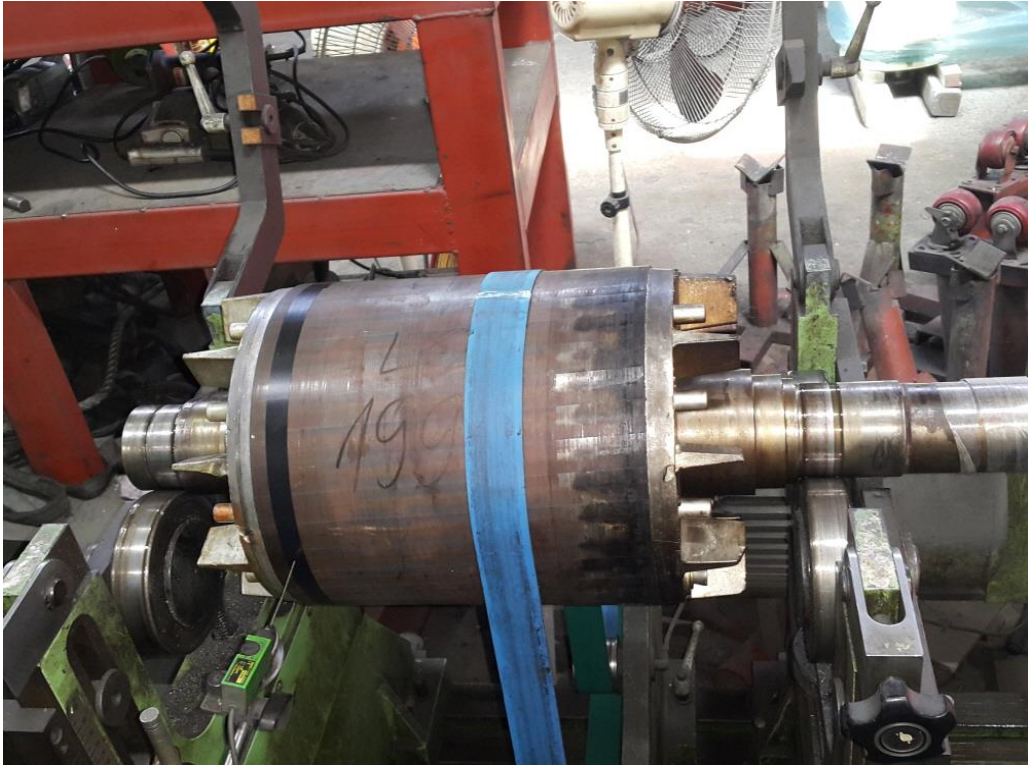
건조 실시

JIN YANG

# 작업 공정 사진

작업공정

VECTOR MOTOR REWINDING



ROTOR

BALANCING 실시

작업공정

VECTOR MOTOR REWINDING



교정 전



교정 후

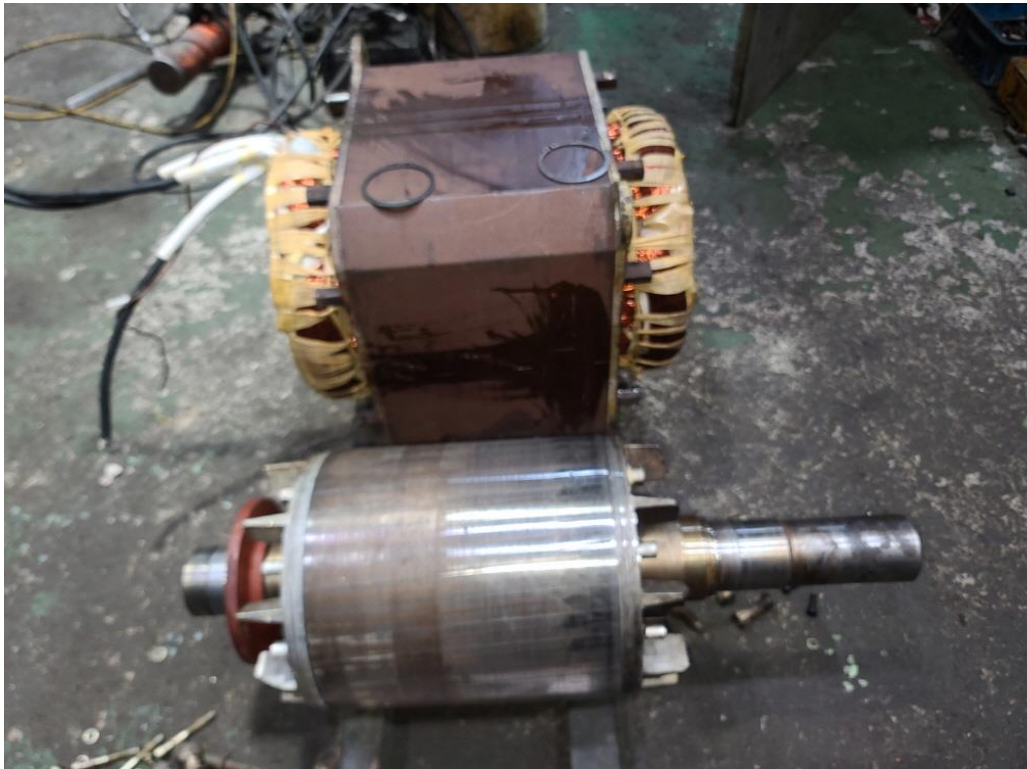
ROTOR

UNBALACE 교정 후

JIN YANG	작업 공정 사진
작업공정	VECTOR MOTOR REWINDING
	
BLOWER	BEARING교환 시운전 TEST 실시
작업공정	VECTOR MOTOR REWINDING
	
BLOWER	각상별 권선저항 동일 운전 CURRENT

JIN YANG	작업 공정 사진
----------	----------

작업공정	VECTOR MOTOR REWINDING
------	------------------------





STATOR 권체	절연건조 후
-----------	--------

작업공정	VECTOR MOTOR REWINDING
------	------------------------



소모품	BEARING 예열 실시
-----	---------------

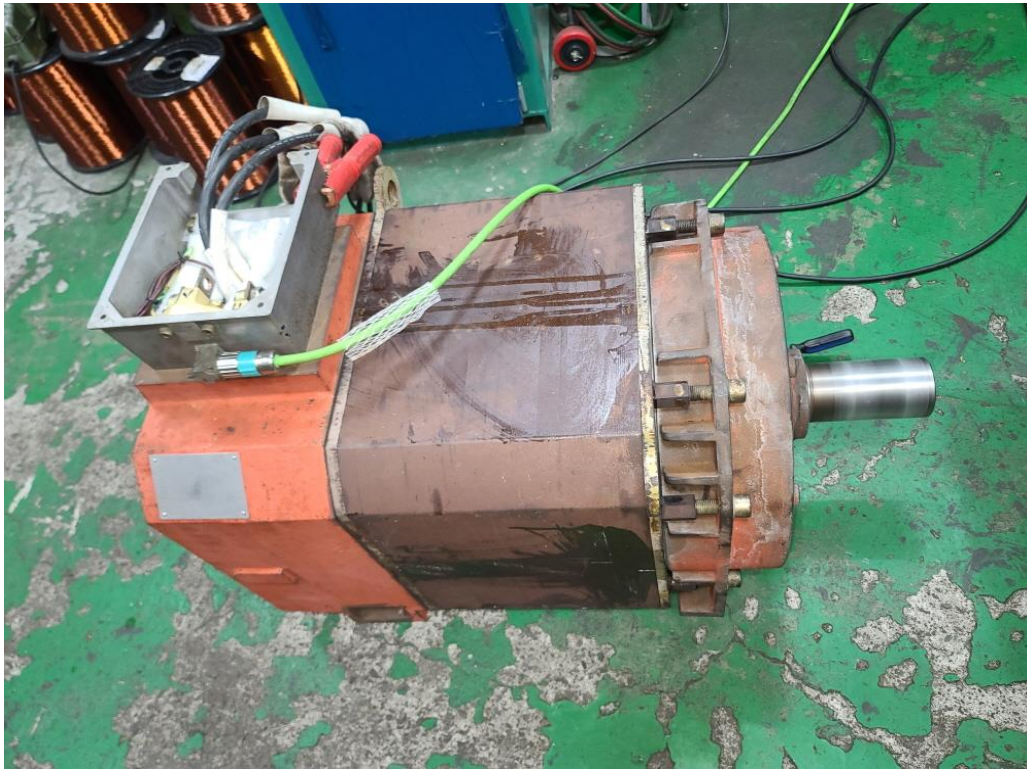
JIN YANG	작업 공정 사진
작업공정	VECTOR MOTOR REWINDING
	
ROTOR	BEARING 예열삽입 및 GREASE CHARGING 조립실시
작업공정	VECTOR MOTOR REWINDING
	
출고검사	절연저항 & 각상별 권선저항

JIN YANG

작업 공정 사진

작업공정

VECTOR MOTOR REWINDING

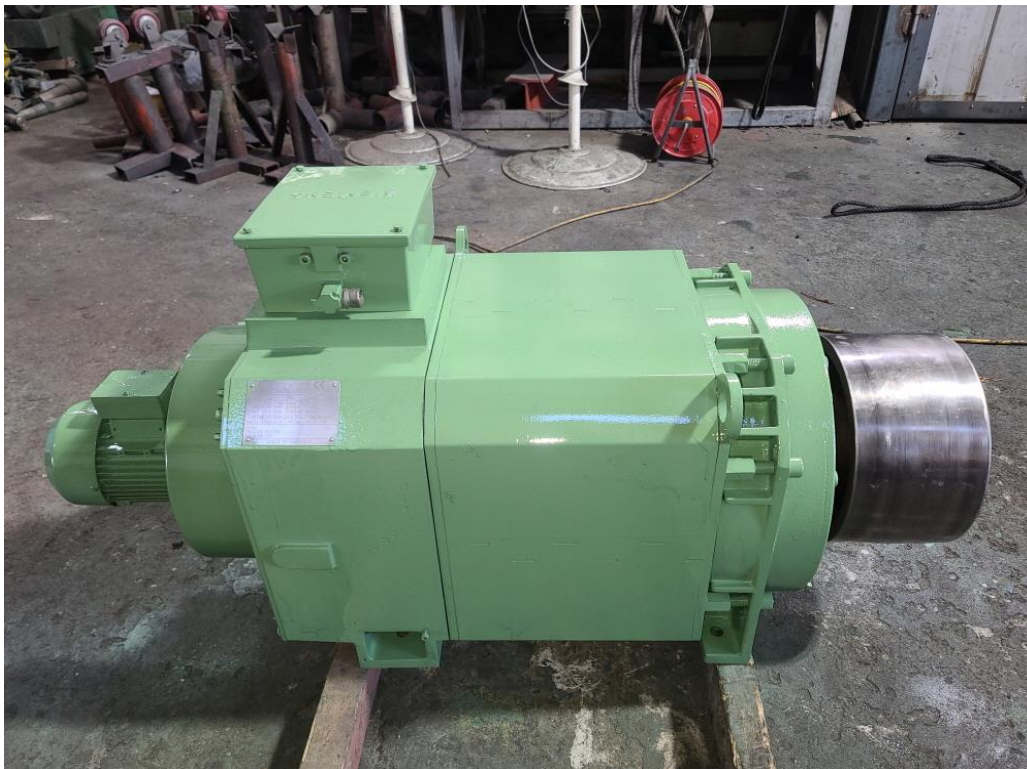


출고검사

시운전 TEST 실시

작업공정

VECTOR MOTOR REWINDING



Ass'y

출고검사 후 COLOR PAINTING

시운전 TEST 운전 MONITORING

SimocoM U (standalone) - Drive A

File Edit Start up Operator control Diagnostics Options Help

PC has Master Control for Drive A => Only term: 663 (pulse enable) and term: 65 x (control enable) are evaluated !!!

speed-controlled operation (closed-loop controlled; without er

**Drive A - Name**

- Configuration
- Analog inputs
- Mechanics
- Limitations
- Digital inputs
- Digital outputs
- Analog outputs
- Monitoring
- Controller
- Traversing blocks
- Equalization contr
- Angular encoder !
- PROFIBUS parmel
- Spindle positionin
- Current setpoint fill
- Speed setpoint fill
- Motor data optimi:
- Password

Reference speed: 1500 rpm  
correspond to: 3.00 V input voltage

Rotational direction:  Clockwise (positive)  Counter-clockwise (nega

Torque: 50.00 %

Stop with space bar !

Setpoint 1: 1500.0 rpm  
Actual = 1507.2 rpm

Speed: 5.9 Nm  
Parameter set: 0  
Motor: 1

Pulse enable NE term: 63/48  
Contr. enable NE term: 64/63  
Capacity utili: A

Motor current: 54.31 A

Start Stop (F9) (Space bar)  
Start via signal  
Override: 100% = 1500 rpm

Traversing dialog

시작 SimocoM U (stan... 2023-03-13 오후 2:29:58