

작업공정사진철

고객명: (주)

공사명: 원자력공장HBM(H111) SPINDLE MOTOR

규격: VECTOR MOTOR 147KW 1000~1350RPM

REPAIR 내역: 분해 및 불순물 CLEANSING DRYING
INSULATING VARNISH DIPPING DRYING
부하HOUSING용사연마
BALANCING 및 UNBALANCE교정
BOLWER MOTOR보수
BEARING교환
입 출고검사 시운전 TEST



<http://jinyangmotor.com/>



JIN YANG

작업 공정 사진

작업공정

VECTOR MOTOR 입고검사

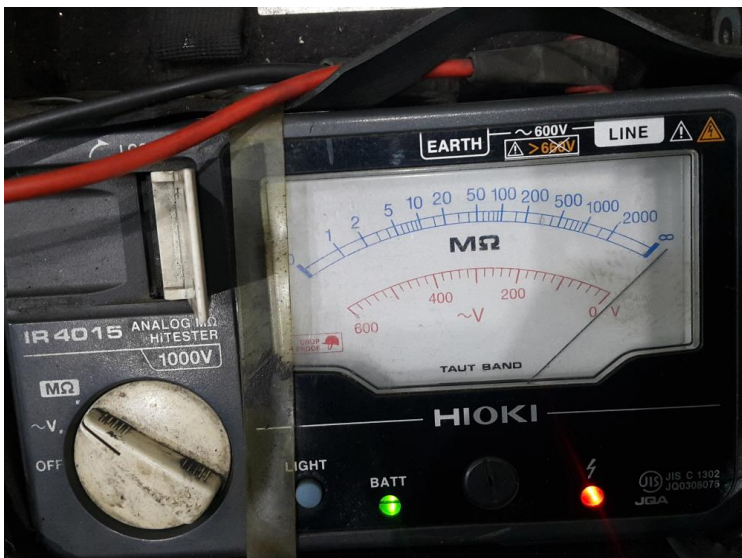


Ass'y

분해 전

작업공정

VECTOR MOTOR 입고검사



권선검사

절연저항 & 각 상별 권선저항 동일

JIN YANG

작업 공정 사진

작업공정

VECTOR MOTOR 입고검사



분해 실시

반 부하측 절연 BEARING

작업공정

VECTOR MOTOR 입고검사



STATOR 권체

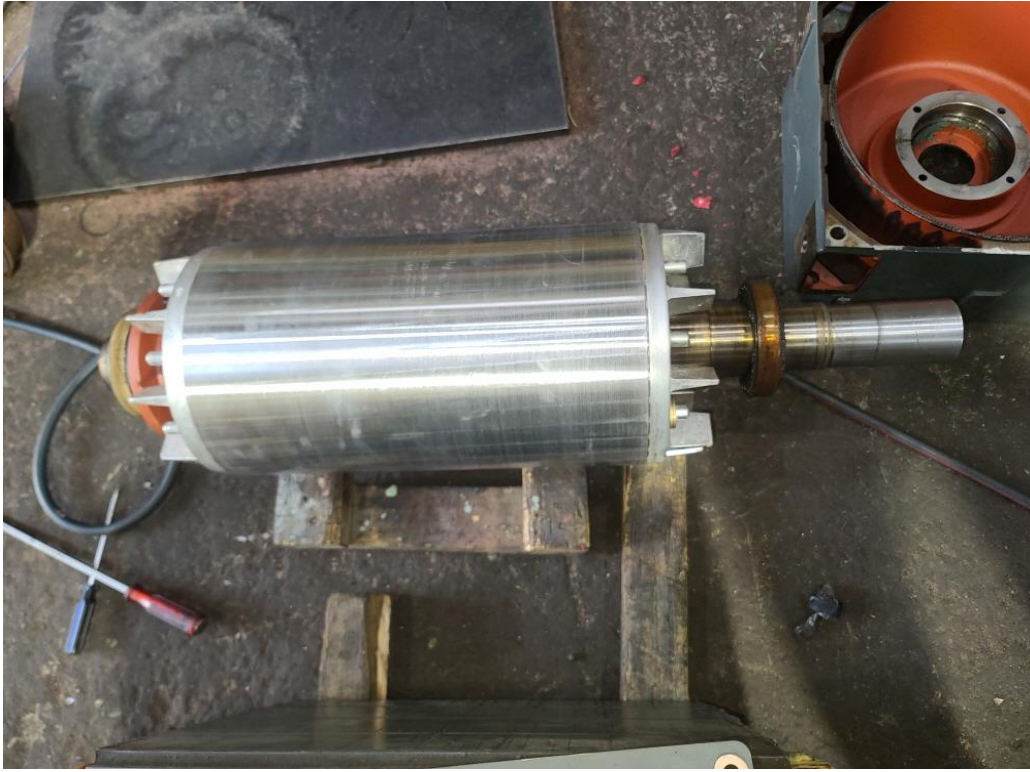
분해후 권선 부

JIN YANG

작업 공정 사진

작업공정

VECTOR MOTOR 입고검사



ROTOR

분해 후

작업공정

VECTOR MOTOR 입고검사



BRACKET

부하측 HOUSING 측정치 5/100으로 불량

JIN YANG

작업 공정 사진

작업공정

VECTOR MOTOR RECONDITION



STATOR 권체

세척 실시

작업공정

VECTOR MOTOR RECONDITION



STATOR 권체

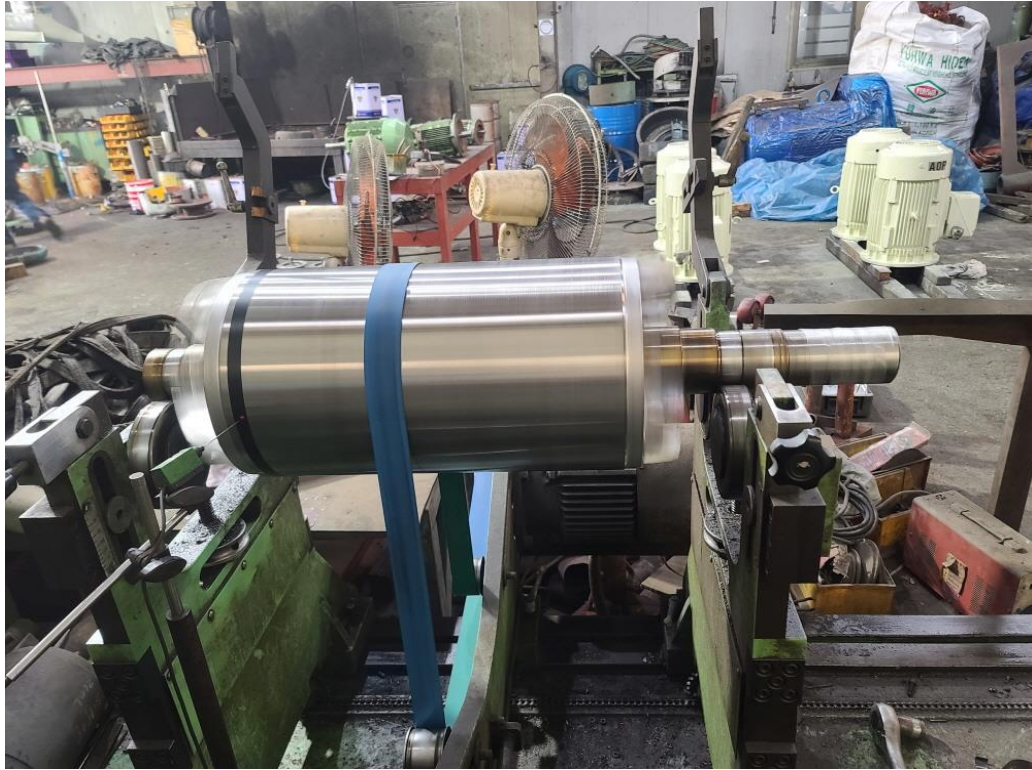
건조 실시

JIN YANG

작업 공정 사진

작업공정

VECTOR MOTOR RECONDITION



ROTOR

BALANCING 실시


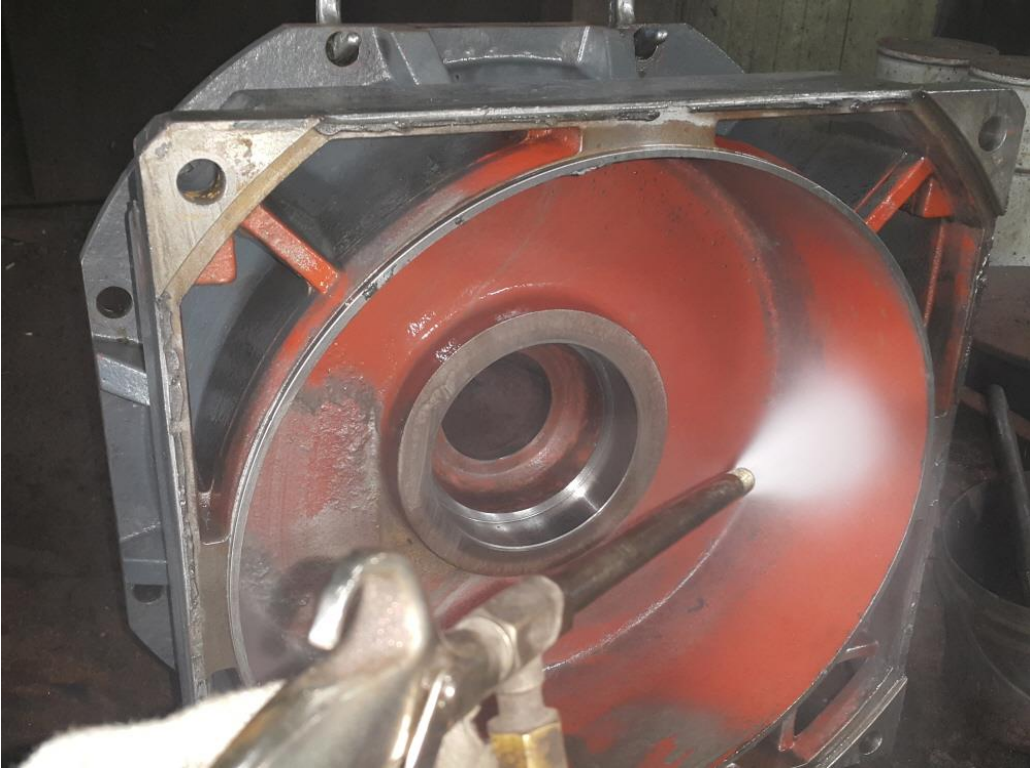
작업공정

VECTOR MOTOR RECONDITION



ROTOR

UNBALANCE 양호

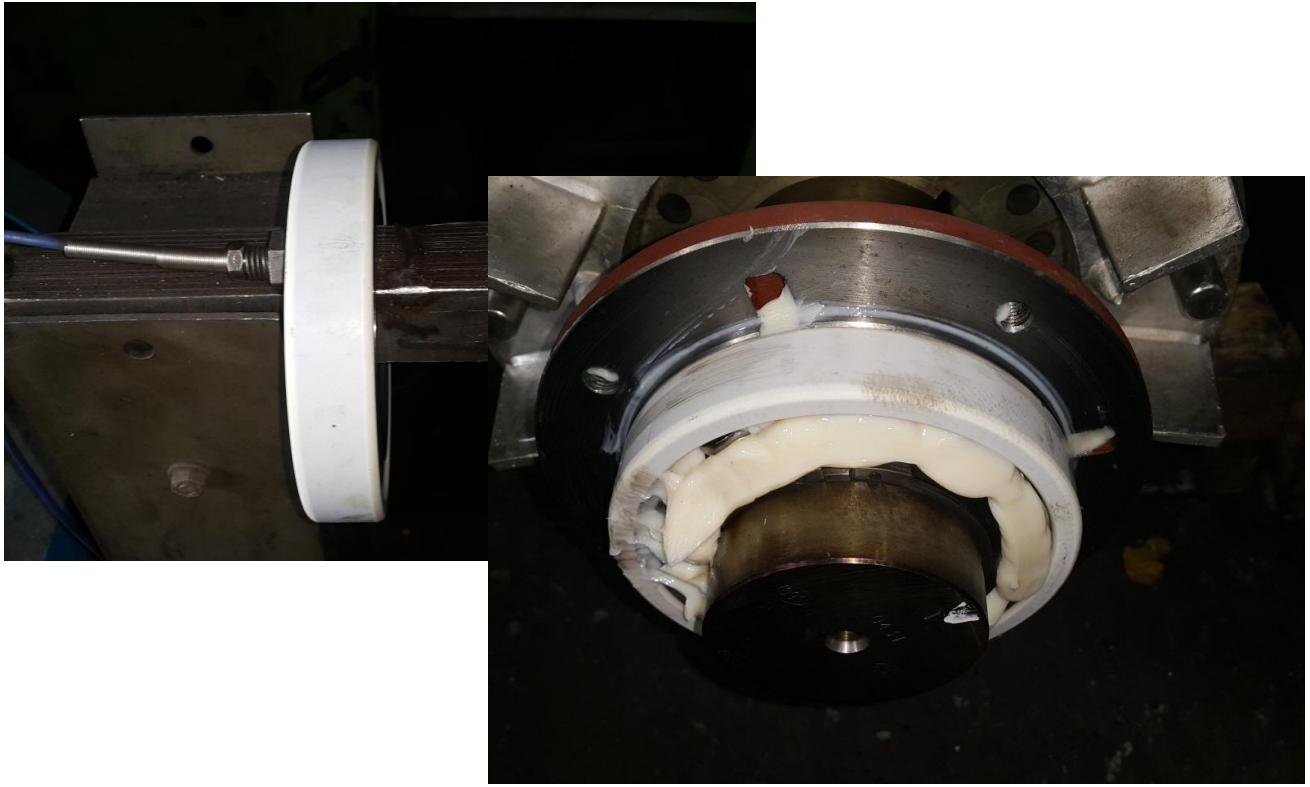
JIN YANG	작업 공정 사진
작업공정	VECTOR MOTOR RECONDITION
	
BRACKET	부하측 HOUSING 보수 후 검사 0/100
작업공정	VECTOR MOTOR RECONDITION
	
조립부품	세척 실시

JIN YANG

작업 공정 사진

작업공정

VECTOR MOTOR RECONDITION



ROTOR

BEARING 예열삽입 및 GREASE CHARGING 조립실시

작업공정

VECTOR MOTOR RECONDITION



출고검사

절연저항 & 각상별 권선저항

JIN YANG

작업 공정 사진

작업공정

VECTOR MOTOR RECONDITION



출고검사

시운전 TEST 실시

작업공정

VECTOR MOTOR RECONDITION



Ass'y

출고검사 후

시운전 TEST 운전 MONITORING

STARTER - TEST - [Drive_unit_1\VECTOR_03 - Expert list]

Project Control panel Edit Target system View Options Window Help

Expert list

- Configuration
- Expert list
- Drive navigator
- Control logic
- Setpoint channel
- Open-loop/closed-loop control
- Functions
- Messages and monitoring
- Commissioning
- Control panel
- Device trace
- Function generator
- Measuring function
- Automatic controller setting
- Stationary/turning measurement
- Communication
- Diagnostics
- Documentation
- SINAMICS LIBRARIES
- MONITOR

Param... Data Parameter text

Param...	Value	Unit	Modifiable to	Access level	Minimum	Maximum
1 r2	Drive operating display		[0] Operation - everything ...	1		
2 p5[0]	BOP operating display selection, Parameter number		Operation	2	0	65535
3 p6	BOP operating display mode		[4] p0005	3		
4 p10	Drive commissioning parameter filter		Ready to run	1	0	65535
5 p13[0]	BOP user-defined list		Operation	3	0	999999
6 p15	Macro drive object		Commission...	1	0	999999
7 r20	Speed setpoint smoothed	rpm		2		
8 r21	CO Actual speed smoothed	rpm		2		
9 r22	Speed actual value rpm smoothed	rpm		2		
10 r24	Output frequency smoothed	Hz		3		
11 r25	CO Output voltage smoothed	Vrms		2		
12 r26	CO DC link voltage smoothed	V		2		
13 r27	CO Absolute actual current smoothed	Arms		2		
14 r28	Modulation depth smoothed	%		3		
15 r29	Current actual value field-generating smoothed	Arms		3		
16 r30	Current actual value torque-generating smoothed	Arms		3		
17 r31	Actual torque smoothed	Nm		2		

Give up control priority

Enables available

Diagnosics

- OFF1 enable
- OFF2 enable
- OFF3 enable
- Enable operation
- Ramp-function gen. enable
- Ramp-function generator start

[0] Operation - everything enabled

Speed: Specified 1000.0 Actual 1000.0 rpm

Torque: Specified 7.08 Actual 10.16 Nm

Output frequency smoothed: 33.3 Hz

CO Output voltage smoothed: 321.6 Vrms

Motor current: 93.19 Arms

Control panel Drive control panel - stop with spacerbar Reatek USB GbE Family Controller TCP Online mode

20°C 대체로 회전

오후 3:36 2023-03-09

http://jinyangmotor.com/

JIN YANG

작업 공정 사진

작업공정

VECTOR MOTOR RECONDITION

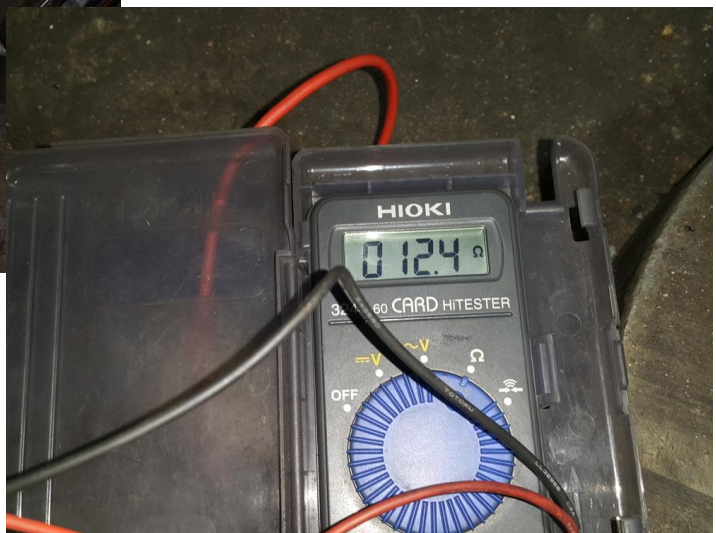


BLOWER

BEARING교환 조립실시

작업공정

VECTOR MOTOR RECONDITION



BLOWER

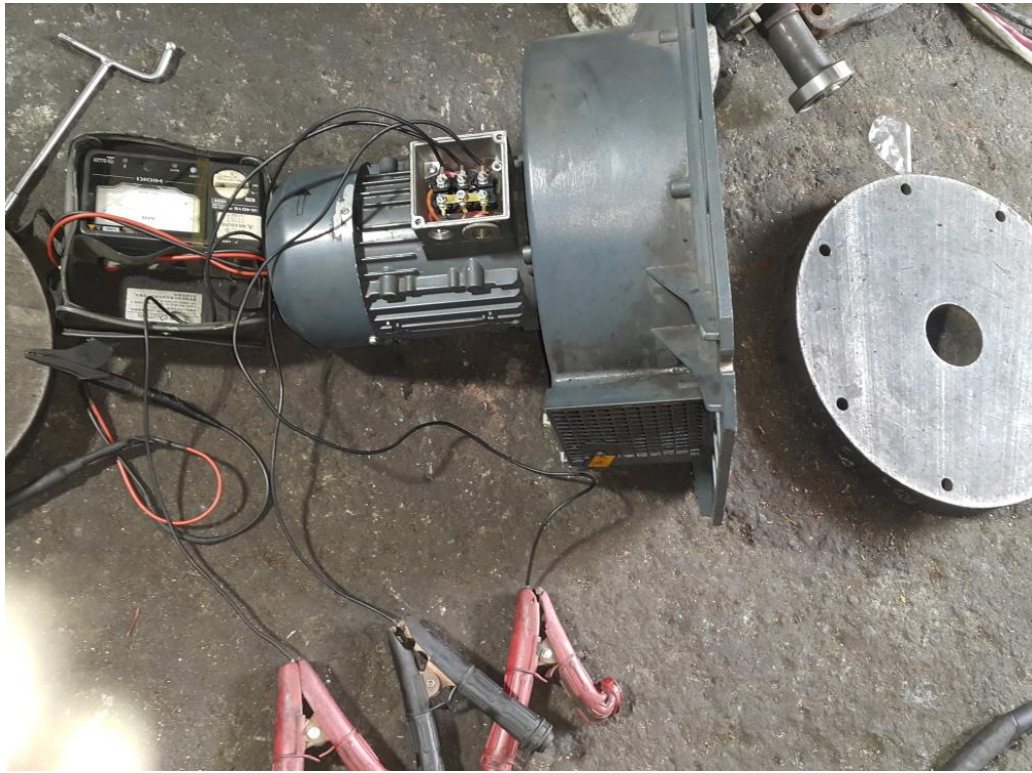
절연저항 & 각 상별 권선저항 동일

JIN YANG

작업 공정 사진

작업공정

VECTOR MOTOR RECONDITION

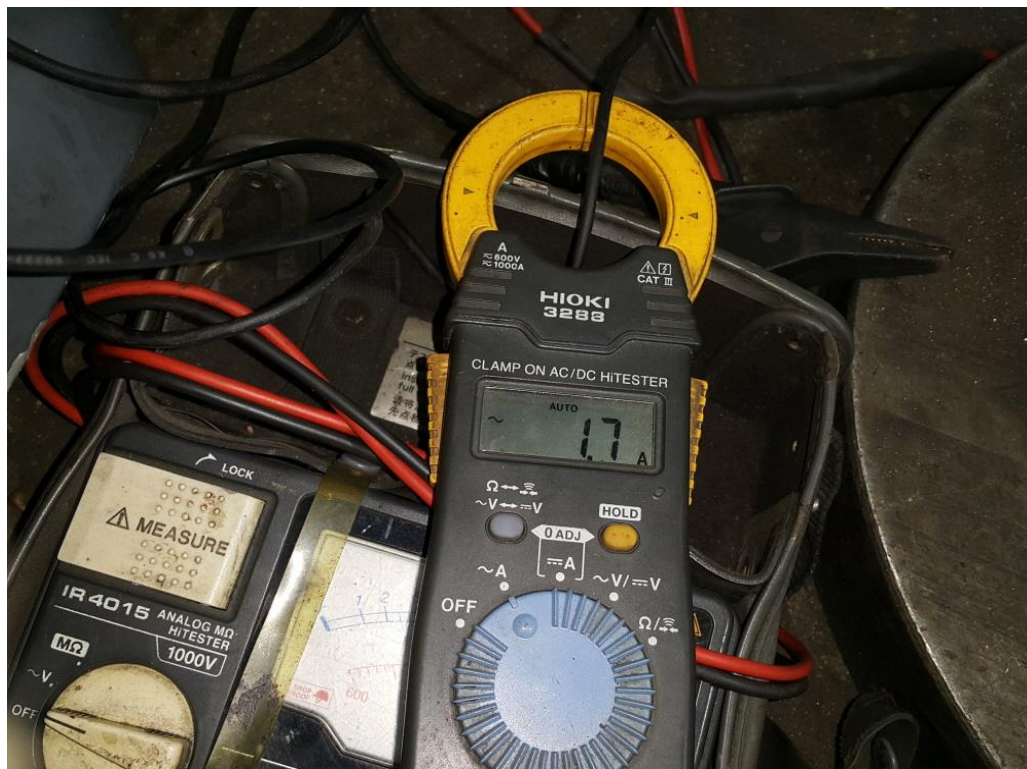


BLOWER

시운전 TEST 실시

작업공정

VECTOR MOTOR RECONDITION



출고검사

시운전 TEST 운전 CURRENT