

작업공정사진철

고객명: (주)

공사명: 터빈공장 PM(P103) MAIN SPINDLE SERVO MOTOR

규격: AC SERVO 172KW 1000~1350RPM

REPAIR 내역: 분해 및 불순물 CLEANSING DRYING
INSULATING VARNISH DIPPING DRYING
부하HOUSING용사연마
ENCODER 사급교환
BEARING교환
입 출고검사 시운전 TEST



<http://jinyangmotor.com/>



JIN YANG

작업 공정 사진

작업공정

VECTOR MOTOR 입고검사



Ass'y

분해 전

작업공정

VECTOR MOTOR 입고검사



권선검사

절연저항 & 각 상별 권선저항 동일

JIN YANG

작업 공정 사진

작업공정

VECTOR MOTOR 입고검사



STATOR 권체

분해후 권선 부

작업공정

VECTOR MOTOR 입고검사



STATOR 권체

분해후 권선

JIN YANG

작업 공정 사진

작업공정

VECTOR MOTOR 입고검사



ROTOR

분해 후

작업공정

VECTOR MOTOR 입고검사



ROTOR

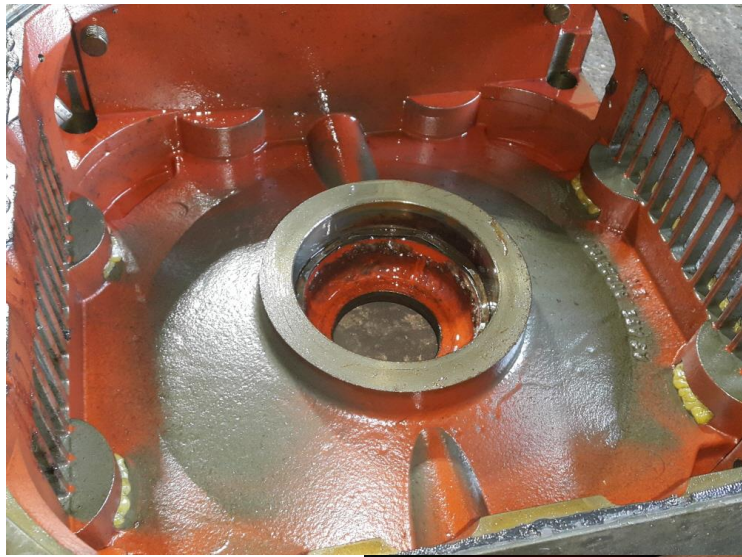
반부하측 절연BEARING 삽입 됨

JIN YANG

작업 공정 사진

작업공정

VECTOR MOTOR RECONDITION



BRACKET

부하측 HOUSING 측정치 6/100으로 불량

작업공정

VECTOR MOTOR RECONDITION



BRACKET

반 부하측 HOUSING 측정치 1/100으로 양호

JIN YANG

작업 공정 사진

작업공정

VECTOR MOTOR RECONDITION



STATOR 권체

세척 실시

작업공정

VECTOR MOTOR RECONDITION



STATOR 권체

건조 실시

JIN YANG

작업 공정 사진

작업공정

VECTOR MOTOR RECONDITION

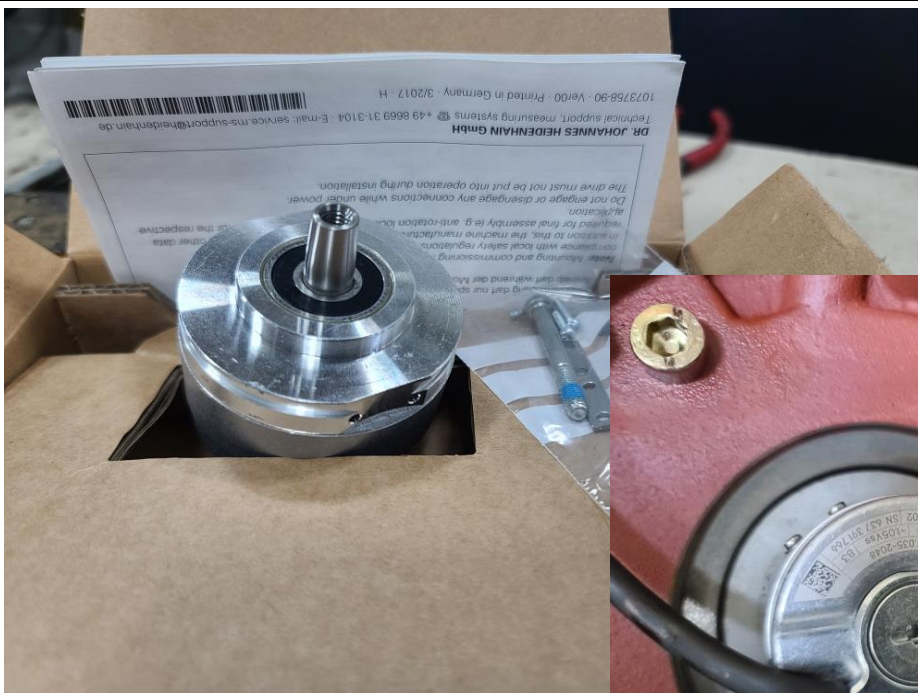


소모품

BEARING 예열삽입 및 GREASE CHARGING 조립실시

작업공정

VECTOR MOTOR RECONDITION



조립 부품

ENCODER 사급교환 실시

JIN YANG

작업 공정 사진

작업공정

VECTOR MOTOR RECONDITION



출고검사

절연저항 & 각상별 권선저항

작업공정

VECTOR MOTOR RECONDITION



출고검사

시운전 TEST 실시

시운전 TEST 운전 MONITORING

STARTER - TEST - [Drive_unit_1\VECTOR_03 - Expert list]

Project Control panel Edit Target system View Options Window Help

Input/output components

- Encoder
- VECTOR_03
 - Insert DCC chart
 - Configuration
 - Expert list
 - Drive navigator
 - Control logic
 - Setpoint channel
 - Open-loop/closed-loop control
 - Functions
 - Messages and monitoring
 - Commissioning
 - Control panel
 - Device trace
 - Function generator
 - Measuring controller setting
 - Automatic controller setting
 - Stationary/turning measurement

Expert list

Param...	Data	Parameter text	Online value	VECTOR_03	Unit	Modifiable to	Access level	Minimum	Maximum
1 r2	All	Drive operating display	[0] Operation - everything ...	All	All	1	All		
2 p5[0]	All	BOP operating display selection, Parameter number	2	All	Operation	2	0	65535	
3 p6	All	BOP operating display mode	[4] p0005	All	Operation	3			
4 p10	All	Drive commissioning parameter filter	[0] Ready	All	Ready to run	1			
5 p13[0]	All	BOP user-defined list	0	All	Operation	3	0	65535	
6 p15	All	Macro drive object	0	All	Commission...	1	0	9999999	
7 r20	All	Speed setpoint smoothed	1000.0	All	rpm	2			
8 r21	All	CO: Actual speed smoothed	1000.0	All	rpm	2			
9 r22	All	Speed actual value rpm smoothed	1000.0	All	rpm	2			
10 r24	All	Output frequency smoothed	33.3	All	Hz	3			
11 r25	All	CO: Output voltage smoothed	322.5	All	Vrms	2			
12 r26	All	CO: DC link voltage smoothed	600.6	All	V	2			
13 r27	All	CO: Absolute actual current smoothed	88.63	All	Arms	2			
14 r28	All	Modulation depth smoothed	75.9	All	%	3			
15 r29	All	Current actual value field-generating smoothed	88.59	All	Arms	3			
16 r30	All	Current actual value torque-generating smoothed	1.57	All	Arms	3			
17 r31	All	Actual torque smoothed	8.24	All	Nm	2			

Drive_unit_1 - VECTOR_03

Give up control priority

Enables available

Diagnoses

OFF1 enable

OFF2 enable

OFF3 enable

Enable operation

Ramp-function gen enable

Ramp-function generator start

Alarms

Control panel

Target system output

Load to Prg output

Diagnoses overview

Control priority Drive control panel - stop with spacebar

Realtek USB GbE Family Controller TCP Online mode

18°C 맑음

오후 4:46

2022-11-10

Speed: Specified 10000.0 rpm Actual 10000.0 rpm

Torque: Specified 8.75 Nm Actual 8.57 Nm

Output frequency smoothed 33.3 Hz

CO: Output voltage smoothed 322.2 Vrms

Motor current 88.63 Arms

n = 500 rpm

0% n x 200 % = 200%

1000.00 rpm

