

# 작업공정사진철

고객명: (주)

공사명: AC SPINDLE VECTOR MOTOR OVERHAUL

규격: AC 105KW 1500~6000RPM

REPAIR 내역: 분해 및 불순물 CLEANSING DRYING  
INSULATING VARNISH DIPPING DRYING  
BALANCING 및 UNBALANCE교정  
BEARING교환 조립  
출고검사 시운전 TEST



<http://jinyangmotor.com/>



JIN YANG

작업 공정 사진

작업공정

VECTOR MOTOR 입고검사



Ass'y

분해 전



작업공정

VECTOR MOTOR 입고검사



권선검사

절연저항 & 각 상별 권선저항 양호

JIN YANG	작업 공정 사진
작업공정	VECTOR MOTOR 입고검사
	
동풍구	유분 등 불순물로 냉각구 고착으로 막힘
작업공정	VECTOR MOTOR 입고검사
	
동풍구	냉각 흡입구 막힘

JIN YANG

작업 공정 사진

작업공정

VECTOR MOTOR 입고검사



Ass'y

세척 후 분해 실시

작업공정

VECTOR MOTOR 입고검사



부하측

BEARING파손

JIN YANG

# 작업 공정 사진

작업공정

VECTOR MOTOR 입고검사

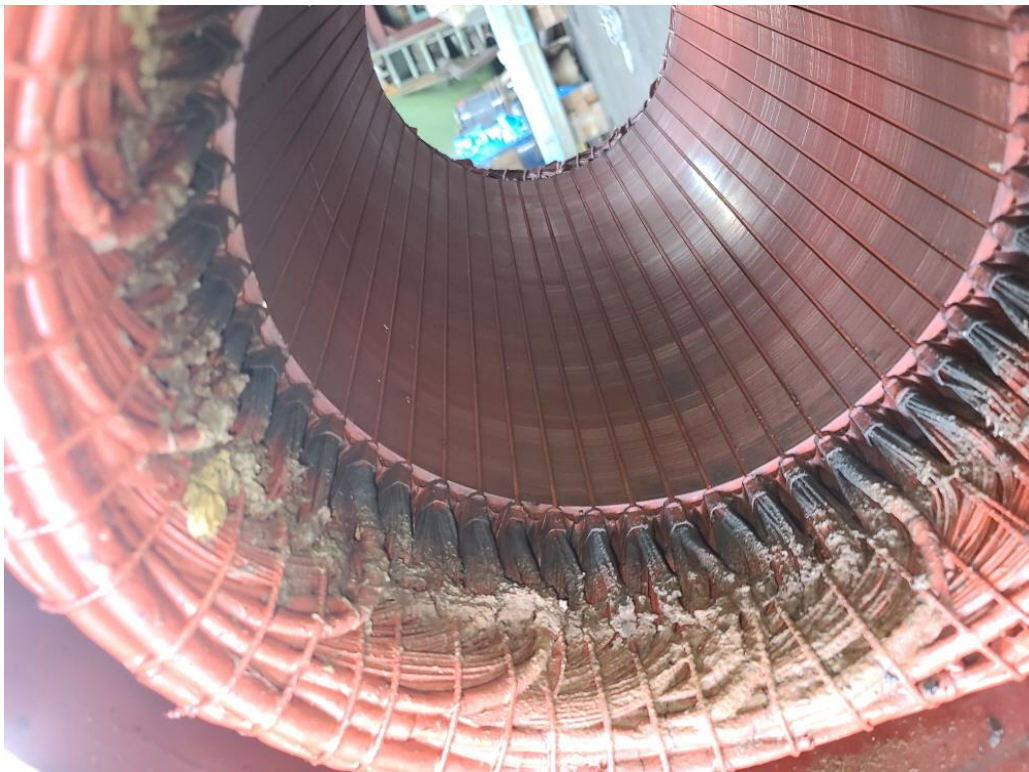


BEARING

취외 후

작업공정

VECTOR MOTOR 입고검사



STATOR 권체

분해후 권선 부

JIN YANG	작업 공정 사진
작업공정	VECTOR MOTOR 입고검사
	
BRACKET	부하측 HOUSING 측정치 3/100로 재 사용
작업공정	VECTOR MOTOR 입고검사
	
BRACKET	반 부하측 HOUSING 측정치 0/100로 양호

JIN YANG

작업 공정 사진

작업공정

VECTOR MOTOR 입고검사



BLOWER

분해 전

작업공정

VECTOR MOTOR 입고검사



BLOWER

부하측 HOUSING 측정치 20/100으로 불량

JIN YANG

작업 공정 사진

작업공정

VECTOR MOTOR OVERHAUL



BLOWER

HOUSING보수 후 BEARING교환 실시

작업공정

VECTOR MOTOR OVERHAUL



STATOR 권체

세척 실시

JIN YANG

작업 공정 사진

작업공정

VECTOR MOTOR OVERHAUL



STATOR 권체

세척 후 건조 실시

작업공정

VECTOR MOTOR OVERHAUL



조립부품

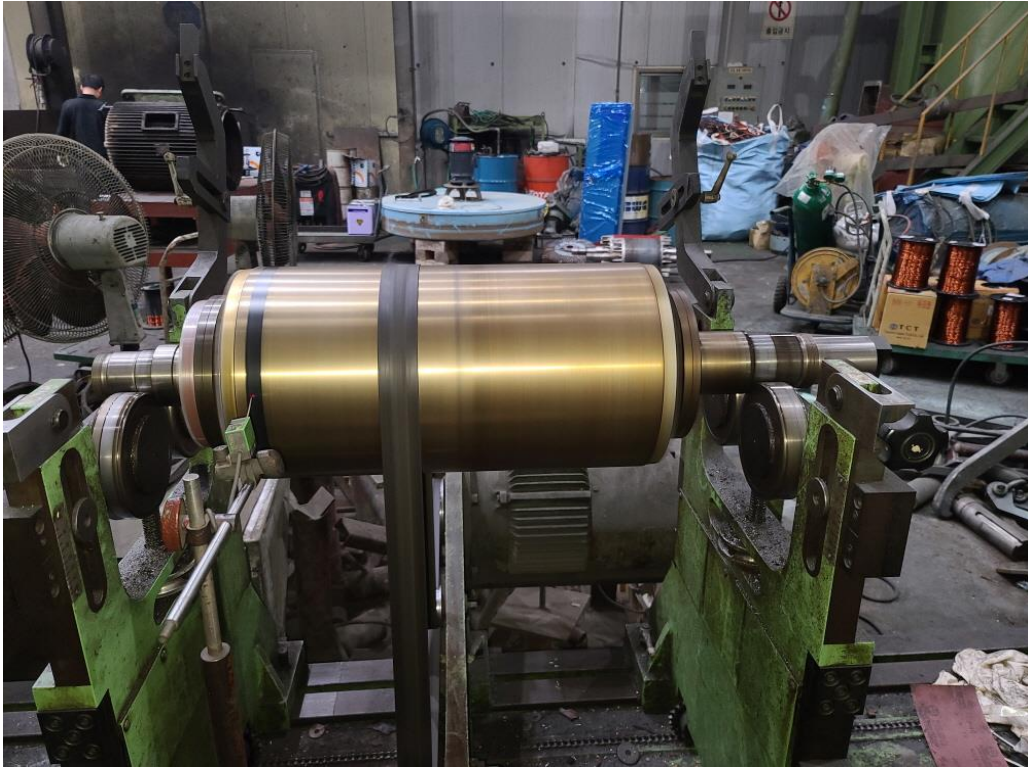
세척 실시

JIN YANG

작업 공정 사진

작업공정

VECTOR MOTOR OVERHAUL

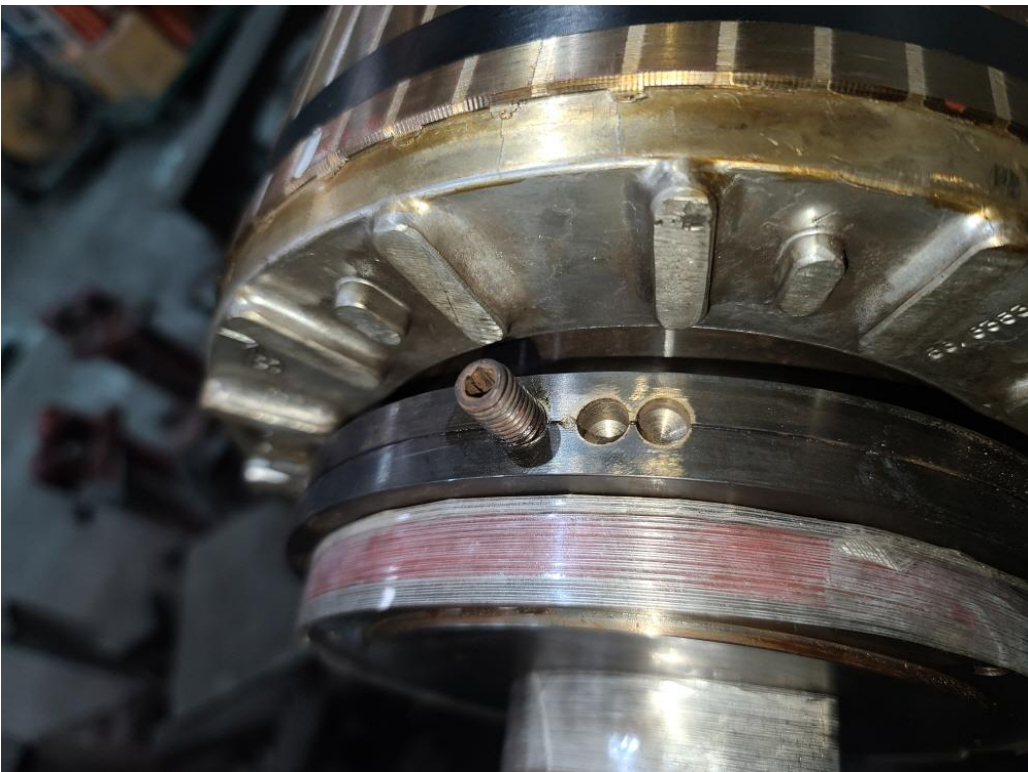


ROTOR

BALANCING 실시


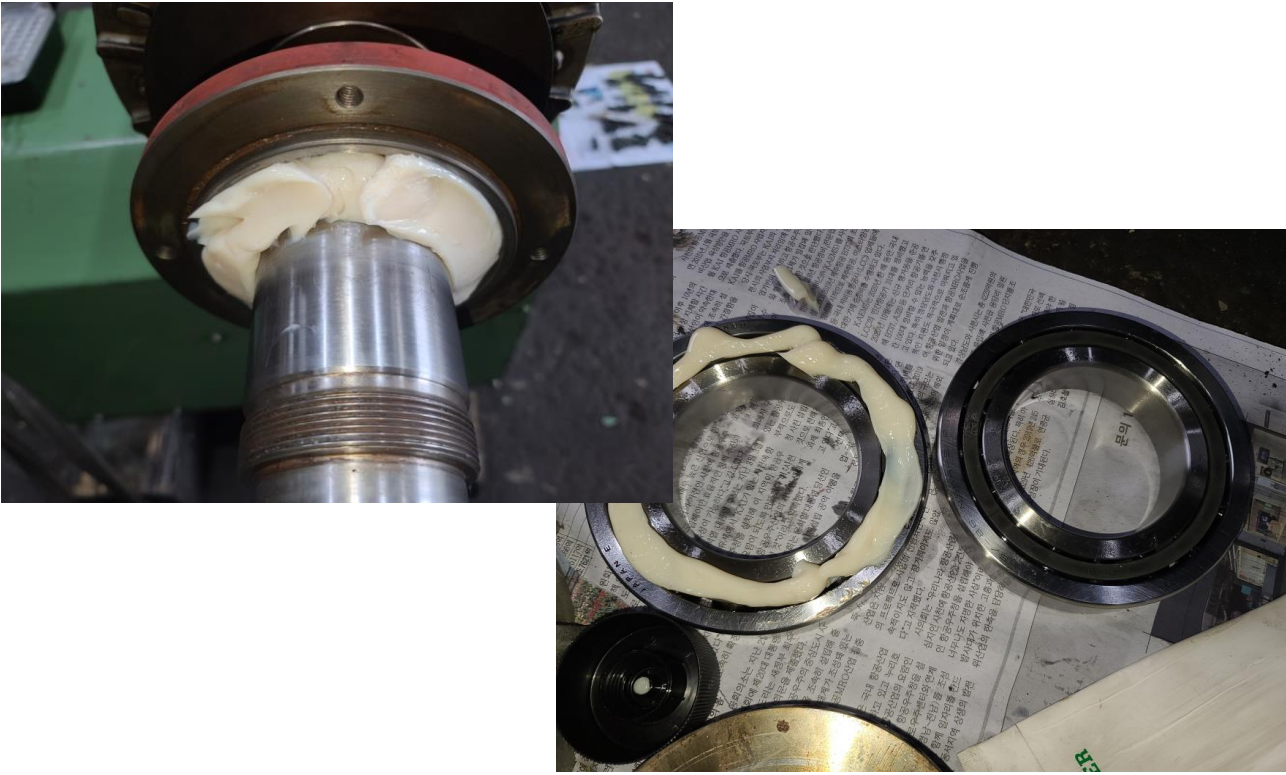
작업공정

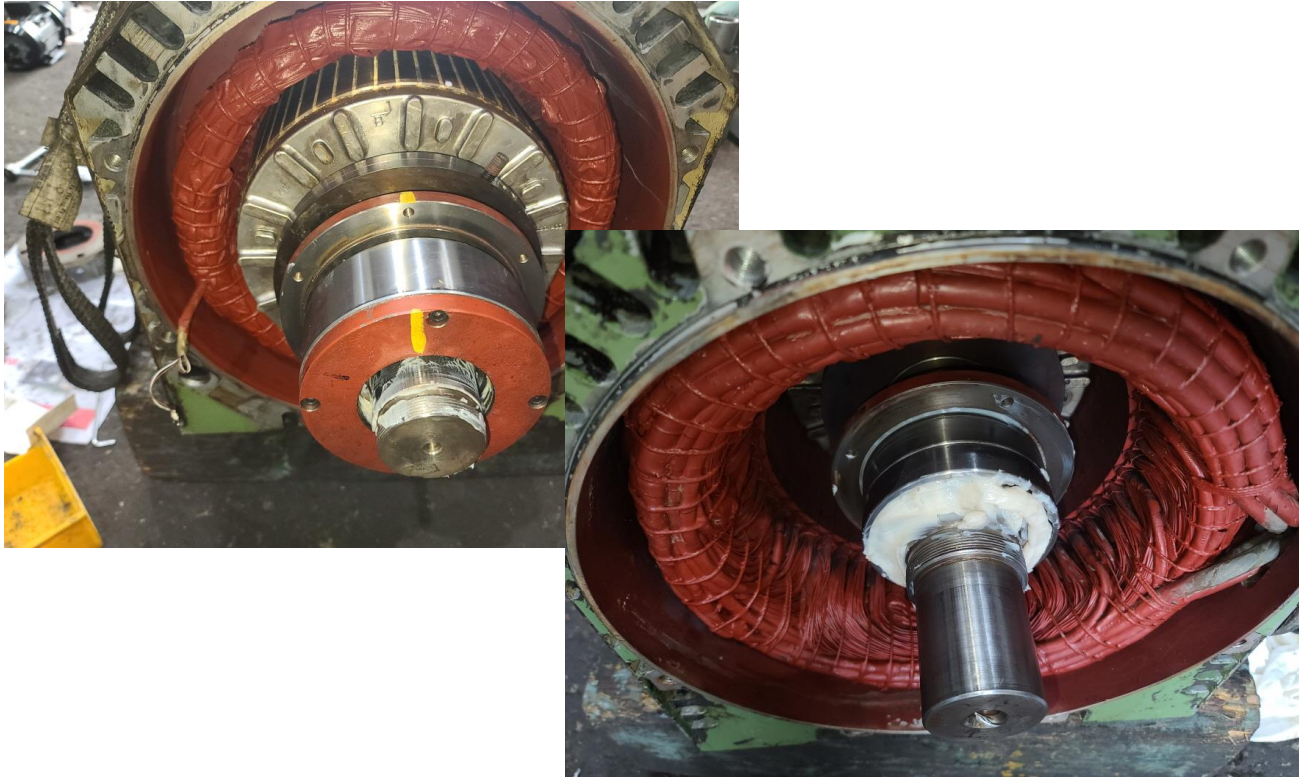

VECTOR MOTOR OVERHAUL



ROTOR

교정된 UNBALANCE REPORT 참조

JIN YANG	작업 공정 사진
작업공정	VECTOR MOTOR OVERHAUL
	
소모부품	교환될 BEARING
작업공정	VECTOR MOTOR OVERHAUL
	
조립부품	GREASE CHARGING 및 BEARING교환 실시

JIN YANG	작업 공정 사진
작업공정	VECTOR MOTOR OVERHAUL
	
Ass'y	조립실시
작업공정	VECTOR MOTOR OVERHAUL
	
출고검사	시운전 TEST 실시

# 시운전 TEST 운전 MONITORING

SimCom U (standalone) – Drive A

File Edit Start up Operator control Diagnostics Options Help

PC has Master Control for Drive A => Only term: 663 (pulse enable) and term: 65.x (control enable) are evaluated !!!

speed-controlled operation (closed-loop controlled, without er

**Drive A - Name**

- Configuration
- Analog inputs
- Mechanics
- Limitations
- Digital inputs
- Digital outputs
- Analog outputs
- Monitoring
- Controller
- Traversing blocks
- Equalization contr
- Angular encoder i
- PROFIBUS parmel
- Spindle positionh
- Current setpoint fill
- Speed setpoint fill
- Motor data optimiz
- Password

Reference speed correspond to 1000 rpm  
2.00 V Input voltage

Rotational direction  
 Clockwise (positive)  
 Counter clockwise (negative)

Torque: 50.00 %

Stop with space bar !

Start (F9) (Space bar)  
Stop (Space bar)

Override: Start via signal

100%  
= 1000 rpm

Traversing dialog

Controller enable PC (F8)

Pulse enable module term: 663 Speed: 1000.0  
 Controller enable term: 65 Torque: 25.4  
 Ramp-unction generator enable Parameter set: 0  
 Pulse enable NE term: 63/48 Motor: 1  
 Contr. enable NE term: 64/63 Motor current: 85.53 A

Setpoint: 1000.0 Actual = 1000.6 rpm

Capacity util: 0

Overview status A

Press F1 to display Help.

시작 SimCom U (stan... 2022-04-13 오후 3:35:05

BALANCING REPORT

# BALANCING INSPECTION REPORT

## SETUP

PART NAME : AC ROTOR 6000RPM			
CUSTOMER :			
TEST TIME : 2022. 4.13 8: 1:42			
GRADE	: G 6.3	RATING SPEED	: 6000 rpm
WEIGHT	: 220.000 kg	TESTING SPEED	: 709 rpm
DIAMETER	: 270 mm	CORRECTION	: ADD
ACCEPTABLE UNBALANCE			
PLANE1	: 8.2 gr	PLANE2	: 8.2 gr

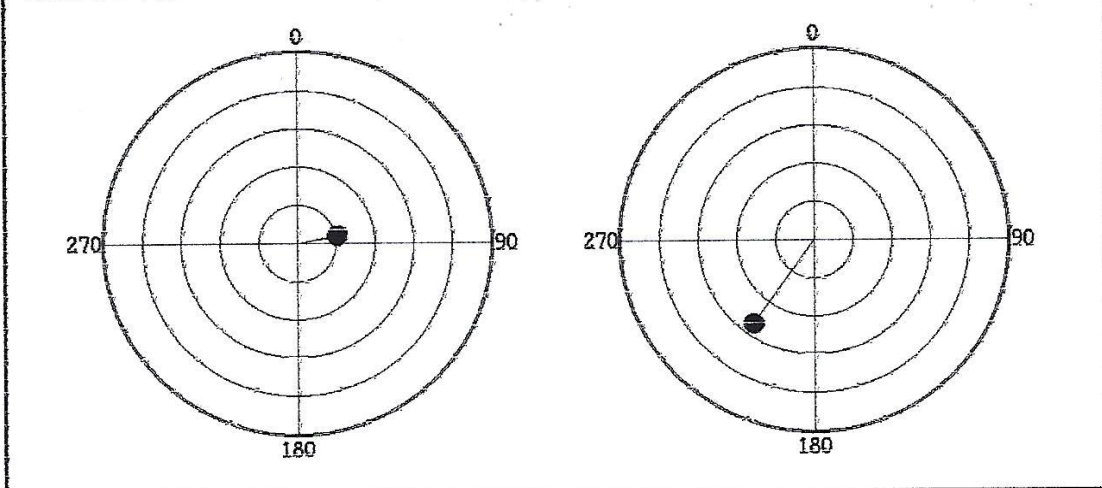
## INITIAL UNBALANCE

	PLANE1	PLANE2
UNBALANCE	11.1 gr	4.9 gr
ANGLE	155 deg	214 deg
RESULT	REJECT	ACCEPT

## CORRECT UNBALANCE

	PLANE1	PLANE2
UNBALANCE	2.1 gr	5.4 gr
ANGLE	78 deg	216 deg
RESULT	ACCEPT	ACCEPT

CORRECT UNBALANCE GRAPH (max = 10.0 gr )



진양전기  
 경남 마산시 내서읍 중리 1123-3번지  
 TEL (055) - 231-9318-9  
 FAX (055) - 231-9314