

작업공정사진철

고객명: 대한 (주)

공사명: SIEMENS VECTOR MOTOR OVERHAUL

규격: 113~147KW 340~460V 34~46Hz 1000~1360RPM

REPAIR 내역: 분해 조립 및 조립부품 불순물 CLEANSING
INSULATING VARNISH DIPPING DRYING
BEARING 교환
ENCODER 교환
입 출고검사 및 시운전 TEST
COLOR PAINTING



<http://jinyangmotor.com/>



JIN YANG

작업 공정 사진

작업공정

147KW VECTOR MOTOR 입고검사



Ass'y

분해 전

작업공정

147KW VECTOR MOTOR 입고검사



Ass'y

분해 전

JIN YANG

작업 공정 사진

작업공정

147KW VECTOR MOTOR 입고검사



권선검사

절연저항 이상 & 각 상별 권선저항

작업공정

147KW VECTOR MOTOR 입고검사



Ass'y

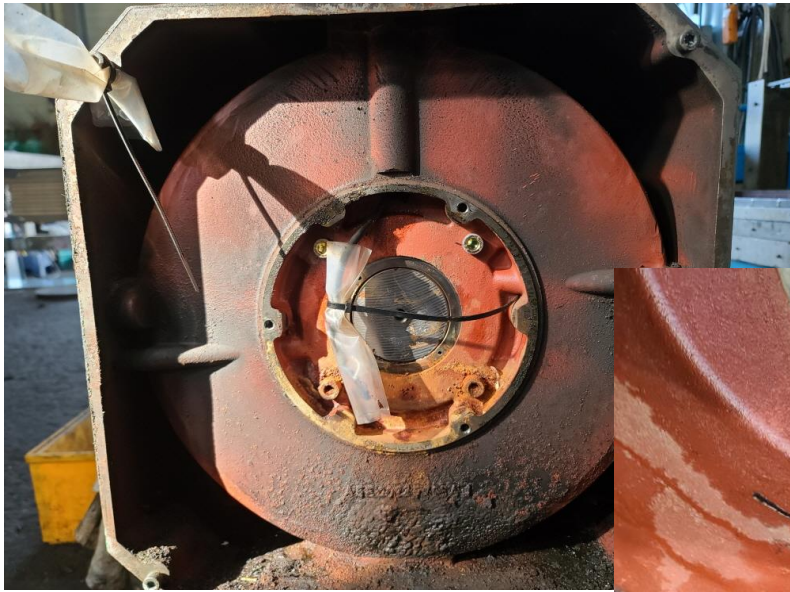
외부 기름때 및 불순물 세척 실시

JIN YANG

작업 공정 사진

작업공정

147KW VECTOR MOTOR 입고검사



분해 실시

외부로부터 물 유입

작업공정

147KW VECTOR MOTOR 입고검사



분해후 권체

물 유입 장기간 방치로 BRACKET와 녹이떨어 있음

JIN YANG

작업 공정 사진

작업공정

147KW VECTOR MOTOR 입고검사

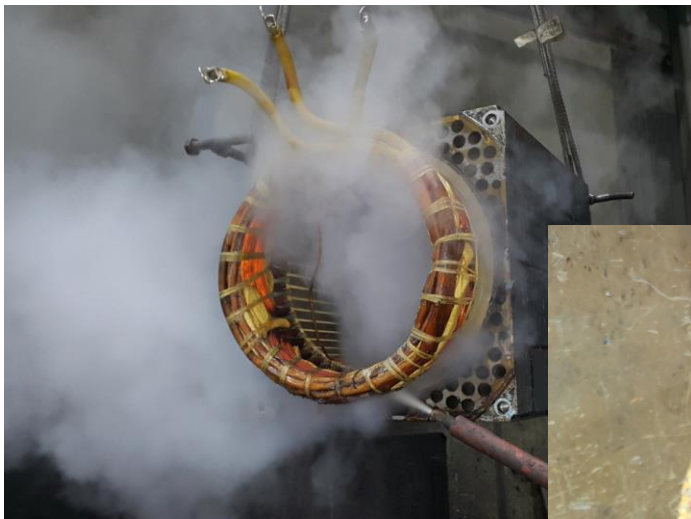


ROTOR

반 부하측 절연 BEARING 사용

작업공정

147KW VECTOR MOTOR OVERHAUL



STATOR 권체

스팀계척 건조 실시

JIN YANG

작업 공정 사진

작업공정

147KW VECTOR MOTOR OVERHAUL

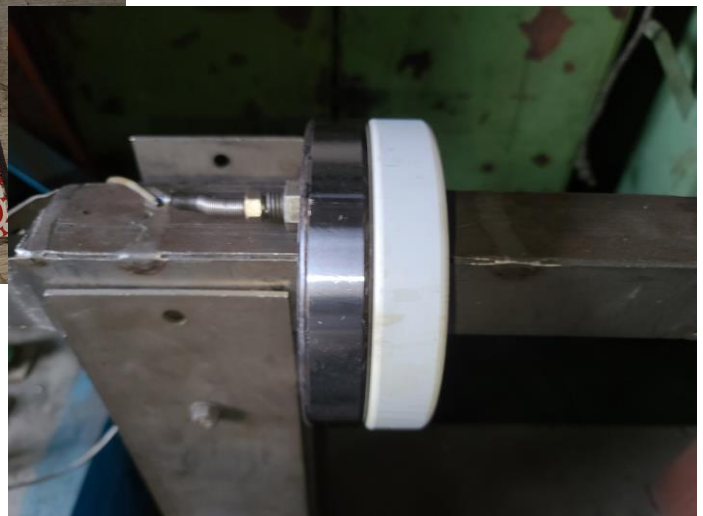


권선

URETHANE MODIFIED ACRYLIC COATING

작업공정

147KW VECTOR MOTOR OVERHAUL



소모품

BEARING 예열 실시

JIN YANG	작업 공정 사진
작업공정	147KW VECTOR MOTOR OVERHAUL
<div style="display: flex; justify-content: space-between;">  <div style="text-align: right;"> <p>절연 BEARING</p>  </div> </div>	
ROTOR	BEARING 예열삽입 및 GREASE CHARGING 조립실시
작업공정	147KW VECTOR MOTOR OVERHAUL
	
소모품	ENCODER 교환

JIN YANG

작업 공정 사진

작업공정

147KW VECTOR MOTOR OVERHAUL



권선검사

절연저항 & 각 상별 권선저항

작업공정

147KW VECTOR MOTOR OVERHAUL



Ass'y

COLOR PAINTING 및 시운전 TEST 실시

시운전 TEST 운전 MONITORING

STARTER - DONG JU - [Drive unit: VECTOR_03 - Expert list]

Project Control panel Edit Target system View Options Window Help

Insert DCC chart

- > Configuration
- > Expert list
- > Drive navigator
- > Control logic
- > Setpoint channel
- > Open-loop/closed-loop control
- > Functions
- > Messages and monitoring
- > Commissioning
- > Control panel
- > Device trace
- > Function generator
- > Measuring function
- > Automatic controller setting
- > Stationary/turning measurement
- > Communication
- > Diagnostics

Expert list

Param...	Data	Parameter text	Online value	VECTOR_03	Unit	Modifiable to	Access level	Minimum	Maximum
1 r2	All	Drive operating display	[0] Operation - everything ...	All	rpm	1	1	All	All
2 p5[0]	All	BOP operating display selection, Parameter number	2	All	Operation	2	0	65535	65535
3 p6	All	BOP operating display mode	[4] p0005	All	Operation	3	0	65535	65535
4 p10	All	Drive commissioning parameter filter	[0] Ready	All	Ready to run	1	0	65535	65535
5 p13[0]	All	BOP user-defined list	0	All	Operation	3	0	9999999	9999999
6 p15	All	Macro drive object	0	All	Commission...	1	0	9999999	9999999
7 r20	All	Speed setpoint smoothed	1000.0	All	rpm	2	0	1000.0	1000.0
8 r21	All	CO: Actual speed smoothed	1000.0	All	rpm	2	0	1000.0	1000.0
9 r22	All	Speed actual value rpm smoothed	1000.1	All	rpm	2	0	1000.1	1000.1
10 r24	All	Output frequency smoothed	33.3	All	Hz	3	0	33.3	33.3
11 r25	All	CO: Output voltage smoothed	321.9	All	Vrms	2	0	321.9	321.9
12 r26	All	CO: DC link voltage smoothed	600.3	All	V	2	0	600.3	600.3
13 r27	All	CO: Absolute actual current smoothed	97.09	All	Arms	2	0	97.09	97.09
14 r28	All	Modulation depth smoothed	75.8	All	%	2	0	75.8	75.8
15 r29	All	Current actual value field-generating smoothed	96.95	All	Arms	3	0	96.95	96.95

Drive up control priority

Enables

DDOS: 0

CDOS: 0

DDOS: 0

Enables available

Diagnostics

- OFF1 enable
- OFF2 enable
- OFF3 enable
- Enable operation
- Ramp/function gen. enable
- Ramp/function generator start
- Setpoint enable

[0] Operation - everything enabled

Speed: 1000.0 rpm (Specified) / 1000.0 rpm (Actual)

Torque: 8.76 Nm (Specified) / 10.11 Nm (Actual)

Output frequency smoothed: 33.3 Hz

CO: Output voltage smoothed: 321.8 Vrms

Motor current: 97.18 Arms

Torque utilization: 0.8 %

n = 500 rpm

0% n x 200 % = 200%

1000.00 rpm

Control panel

Target system output

Load to PG output

Diagnostics overview

Control priority Drive control panel - stop with spacebar

Realtelk USB GbE Family Controller TCP Online mode

온도 29°C 비 약간

오후 12:18

2021-12-08

Press F1 to open Help display.

Control panel

Target system output

Load to PG output

Diagnostics overview

Control priority Drive control panel - stop with spacebar

Realtelk USB GbE Family Controller TCP Online mode

온도 29°C 비 약간

오후 12:18

2021-12-08