

작업공정사진철

고객명: (주)

공사명: 제강 100톤 전기로 제어용



규격: AC 68KW 2000RPM(1PH 7184-2NF 250AA3)

REPAIR 내역: 분해 및 불순물 CLEANSING DRYING
INSULATING VARNISH DIPPING DRYING
양측 HOUSING METALLIZING 연마
BEARING교환 조립
입 출고검사 시운전 TEST 및 COLOR PAINTING



<http://jinyangmotor.com/>



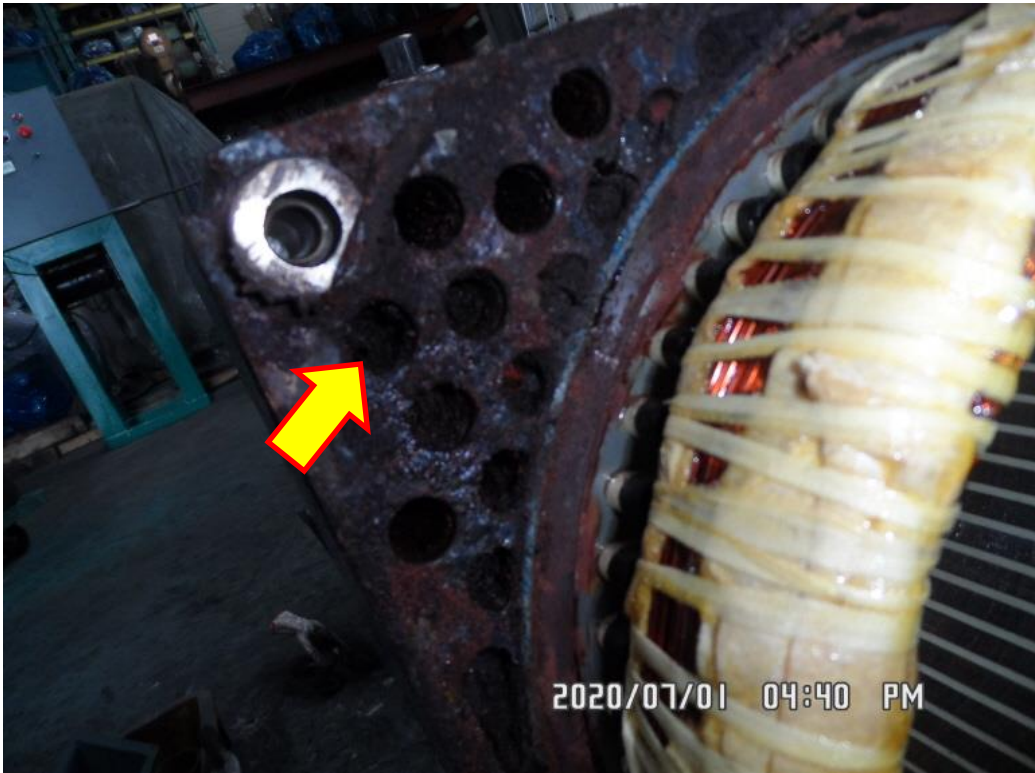
JIN YANG	작업 공정 사진
작업공정	AC SERVO MOTOR 입고검사
	
Ass'y	분해 전
작업공정	AC SERVO MOTOR 입고검사
	
권선검사	절연저항 & 각 상별 권선저항 동일

JIN YANG

작업 공정 사진

작업공정

AC SERVO MOTOR 입고검사

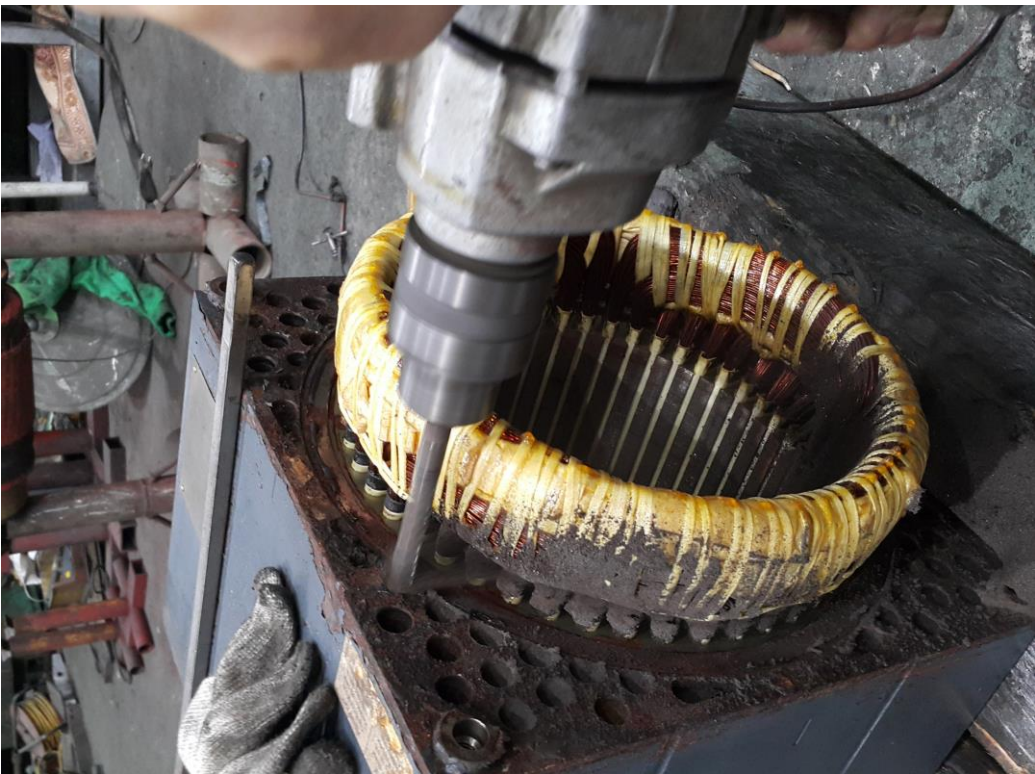


냉각구

철분으로 막힘 고착

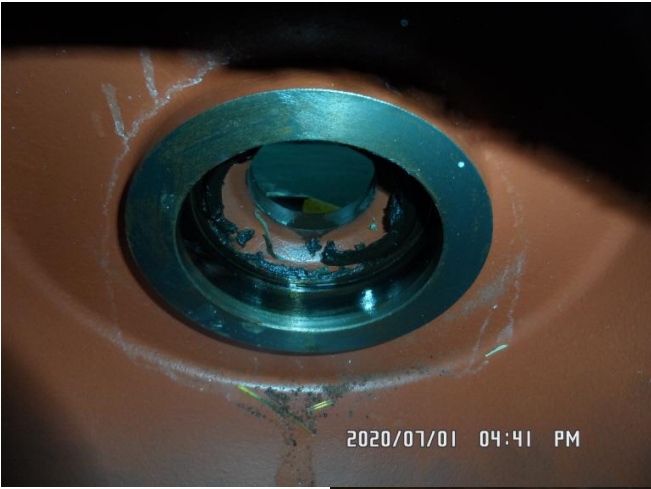
작업공정


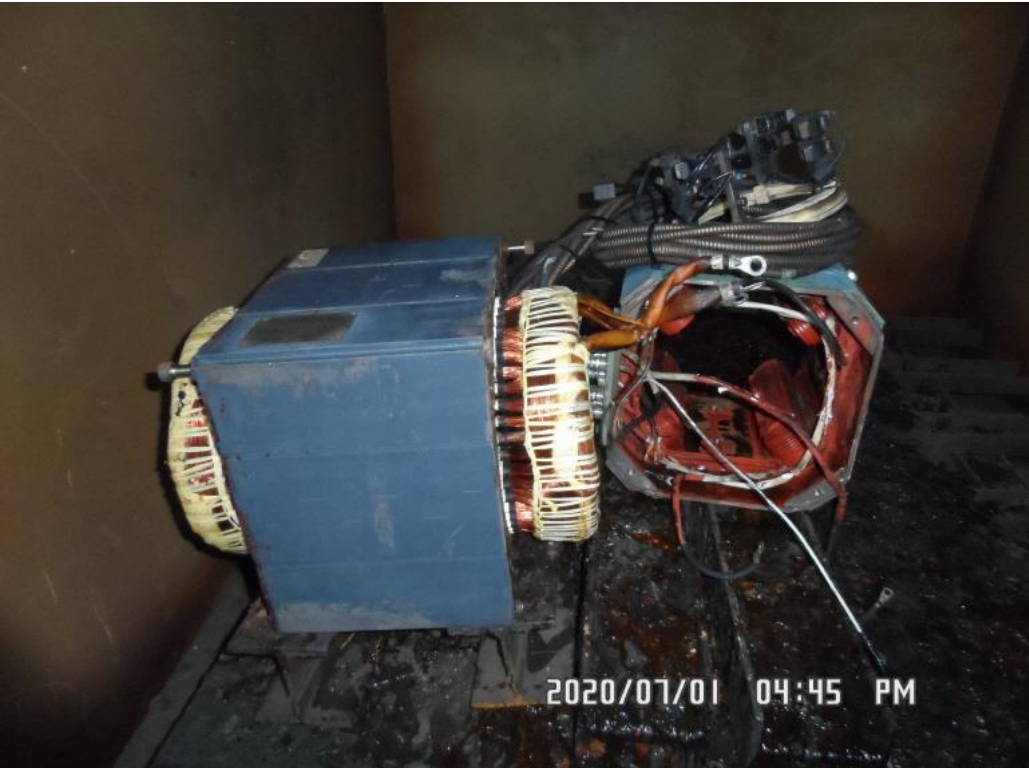
AC SERVO MOTOR 입고검사





냉각구

철분으로 막힌 냉각구 드릴작업 실시

JIN YANG	작업 공정 사진
작업공정	AC SERVO MOTOR 입고검사
	
BRACKET	부하측 HOUSING 측정치 3.5/100로 불량
작업공정	AC SERVO MOTOR 입고검사
	
BRACKET	반 부하측 HOUSING 측정치 4/100로 불량

JIN YANG	작업 공정 사진
작업공정	AC SERVO MOTOR RECONDITION
	
STATOR 권체	세척 후
작업공정	AC SERVO MOTOR RECONDITION
	
STATOR 권체	세척 후 건조 실시

JIN YANG	작업 공정 사진
작업공정	AC SERVO MOTOR RECONDITION
	
조립부품	BEARING 예열 실시
작업공정	AC SERVO MOTOR RECONDITION
	
조립부품	BEARING 예열 삽입 조립 실시

JIN YANG	작업 공정 사진
작업공정	AC SERVO MOTOR RECONDITION



BRACKET	부하측 HOUSING 보수 후 검사 0/100
---------	---------------------------

작업공정	AC SERVO MOTOR RECONDITION
------	----------------------------



BRACKET	반 부하측 HOUSING 보수 후 검사 0/100
---------	-----------------------------

카메라가 떨어져 배터리 불량으로 인하여 날자 오류일부 발생 됨

<http://jinyangmotor.com/>

JIN YANG

작업 공정 사진

작업공정

AC SERVO MOTOR RECONDITION



출고검사

절연저항 & 각상별 권선저항

작업공정

AC SERVO MOTOR RECONDITION



출고검사

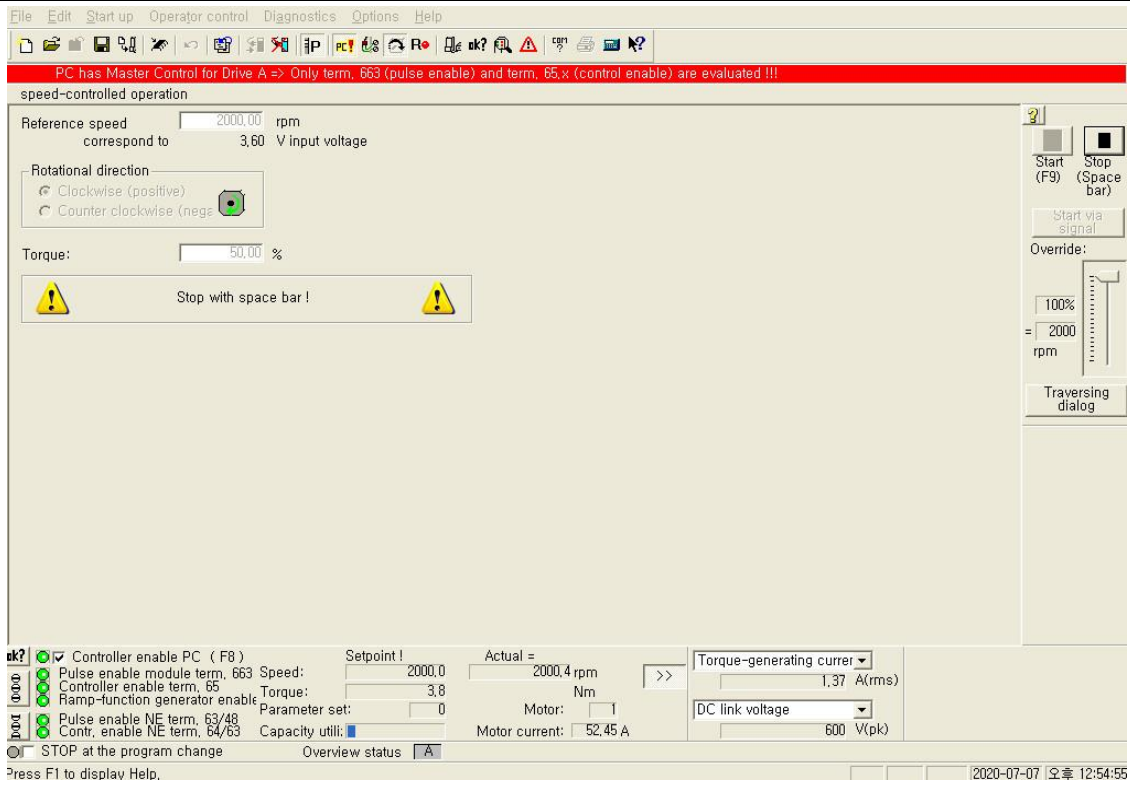
시운전 TEST 실시

JIN YANG

작업 공정 사진

작업공정

AC SERVO MOTOR RECONDITION



출고검사

시운전 TEST 실시

작업공정

AC SERVO MOTOR RECONDITION



출고검사 후

COLOR PAINTING


시운전 TEST 운전 MONITORING

File Edit Start-up Operator control Diagnostics Options Help

PC has Master Control for Drive A => Only term, 663 (pulse enable) and term, 65,x (control enable) are evaluated !!!



speed-controlled operation

Reference speed rpm
 correspond to V input voltage

Rotational direction 

Clockwise (positive)
 Counter-clockwise (negative)

Torque: %

 Stop with space bar ! 

Start (F9) Stop (Space bar) Start via signal Override: = rpm

Traversing dialog

Torque-generating curren A(rms)
 V(pk)
 Actual = rpm
 Nm
 Motor:
 Motor current: A

Controller enable PC (F8)
 Pulse enable module term, 663 Speed:
 Controller enable term, 65 Torque:
 Ramp-function generator enable Parameter set:
 Pulse enable NE term, 63/48 Capacity utili:
 Contr. enable NE term, 64/63

STOP at the program change Overview status

Press F1 to display Help.

2020-07-07 오후 12:54:55